



7 Riverbank Studios, Worsham



## 7 Riverbank Studios

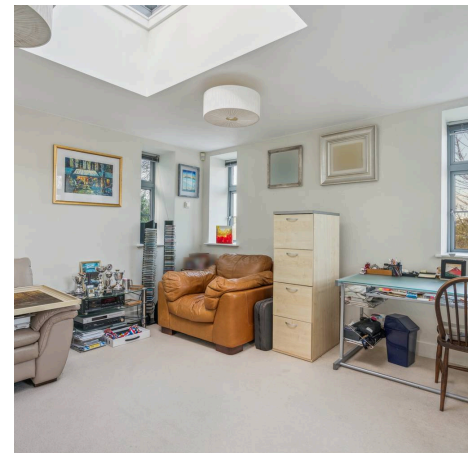
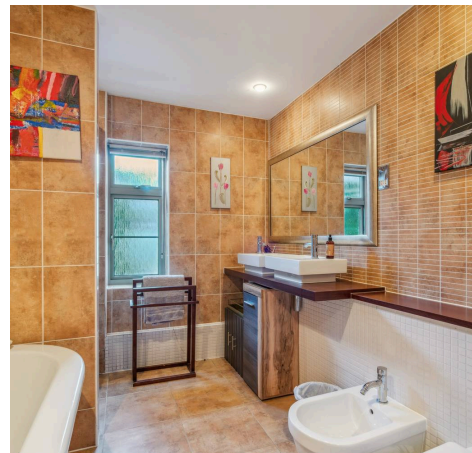
Wonderfully unique conversion of the former Witney Waterworks with this property being one of only two detached homes on the development.

Council Tax band: E

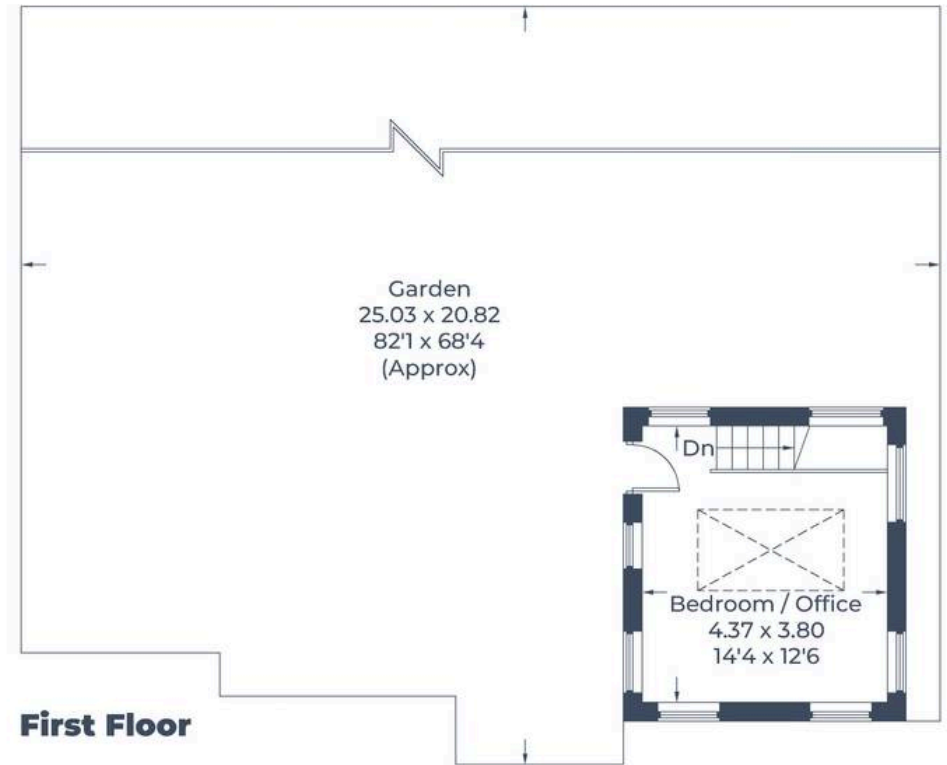
EPC Energy Efficiency Rating: E

EPC Environmental Impact Rating: F

- Set in an idyllic and peaceful position with far reaching countryside views over the Windrush Valley.
- Underground parking for two cars with additional visitor parking spaces.
- Terraces to the living room and bedroom one with an additional roof garden adjoining bedroom two.
- Open plan kitchen/dining/living room with high quality integrated appliances and sliding doors leading to the terrace creating the perfect space for entertaining.



Approximate Gross Internal Area  
Ground Floor = 91.1 sq m / 981 sq ft  
First Floor = 17.7 sq m / 190 sq ft  
Total = 108.8 sq m / 1,171 sq ft





## Simpsons Witney Branch

4 Langdale Court Witney, Oxfordshire - OX28 6AD

01993 835030 • [witney@simpsonsproperty.com](mailto:witney@simpsonsproperty.com) • [www.simpsonsproperty.com/](http://www.simpsonsproperty.com/)