



25 Saffron Crescent, Carterton

Guide Price £325,000



25 Saffron Crescent

Carterton, Carterton

Council Tax band: D

Tenure: Freehold

EPC Energy Efficiency Rating: C

EPC Environmental Impact Rating: C

- Vacant property offered with no onward chain. Brilliantly suited to first time buyers, families and investors
- Three/four bedroom property on the popular Shilton Park development
- Garage and off street parking to the rear of the property
- Kitchen is fitted with integrated appliances



Approximate Gross Internal Area
Ground Floor = 47.0 sq m / 506 sq ft
First Floor = 43.8 sq m / 471 sq ft
Total = 90.8 sq m / 977 sq ft
(Excluding Void)

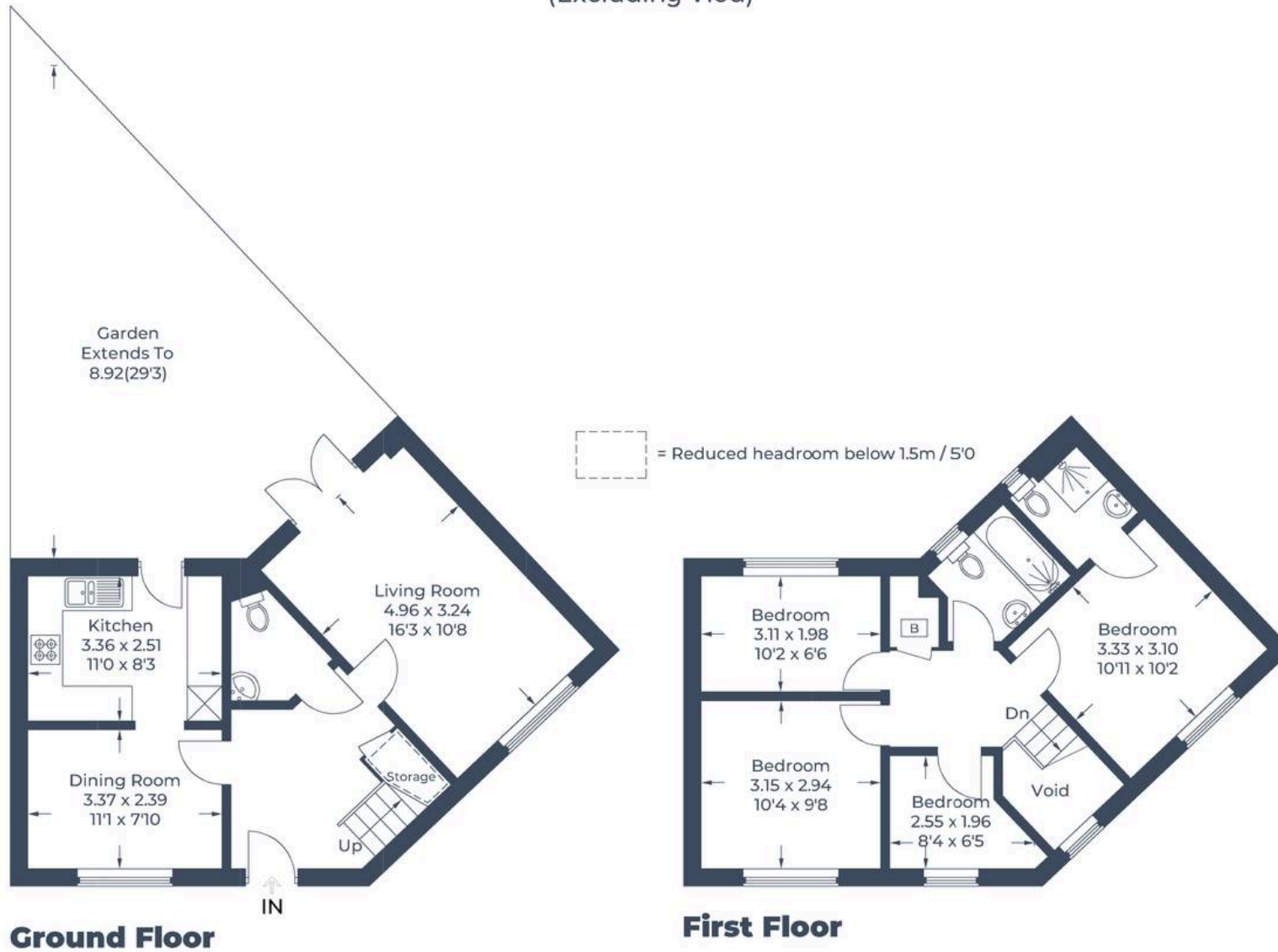


Illustration for identification purposes only,
measurements are approximate, not to scale.
© CJ Property Marketing Produced for Simpsons Witney



Simpsons Witney Branch

4 Langdale Court Witney, Oxfordshire - OX28 6AD

01993 835030 • witney@simpsonsproperty.com • www.simpsonsproperty.com/