



4 Chandler Close, Bampton

Guide Price



4 Chandler Close

A great opportunity to purchase this well presented three-bedroom semi-detached home located in the attractive village of Bampton.

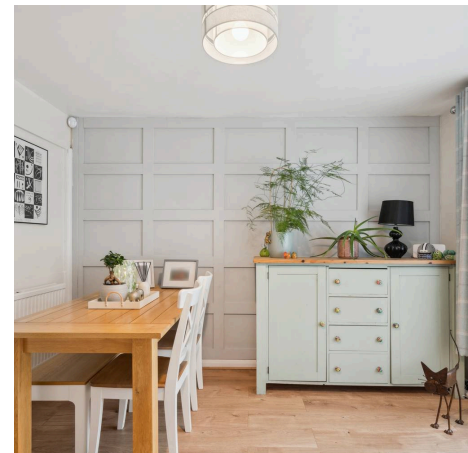
Council Tax band: C

Tenure: Freehold

EPC Energy Efficiency Rating: E

EPC Environmental Impact Rating: E

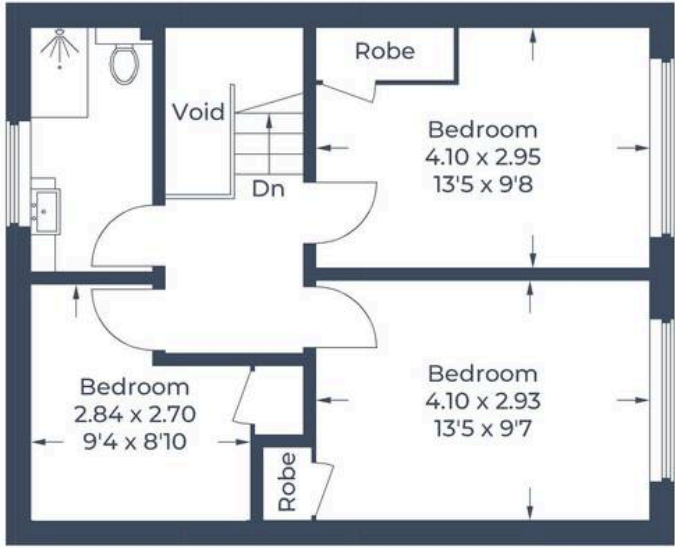
- Much improved by the current owners with a recently upgraded kitchen and bathroom.
- A well-presented three-bedroom semi-detached home located in the popular village of Bampton within walking distance of all local amenities including the local primary school which is located approx.
- Spacious sitting room with fireplace.
- Driveway parking for two cars.
- Three double bedrooms, all with built in storage.
- Landscaped south-facing garden.



Approximate Gross Internal Area
Ground Floor = 52.7 sq m / 567 sq ft
First Floor = 43.0 sq m / 463 sq ft
Total = 95.7 sq m / 1,030 sq ft
(Excluding Void)



Ground Floor



First Floor



Simpsons Witney Branch

4 Langdale Court Witney, Oxfordshire - OX28 6AD

01993 835030 • witney@simpsonsproperty.com • www.simpsonsproperty.com/