



Flat 4, 2 Harvest Grove, Witney



Flat 4

A fantastic opportunity to purchase this superb two-bedroom first floor flat located on the popular Madley Park development within walking distance of all local amenities.

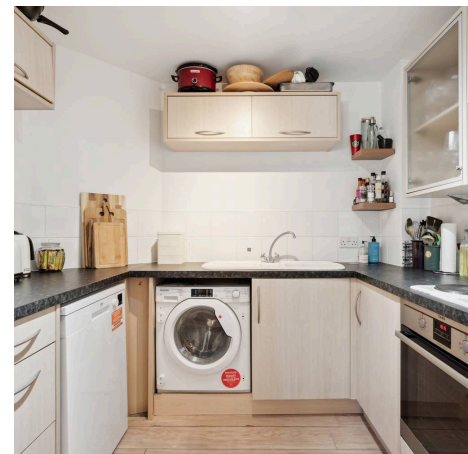
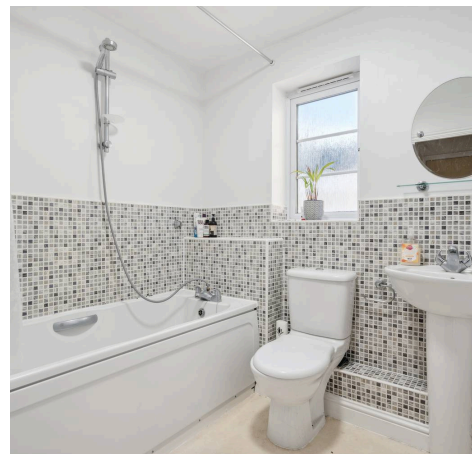
Council Tax band: C

Tenure: Leasehold

EPC Energy Efficiency Rating: B

EPC Environmental Impact Rating: C

- A superb two-bedroom first floor flat located on the popular Madley Park development within walking distance of all local amenities.
- Two double bedrooms, master with ensuite shower room.
- Allocated parking space and additional visitor parking spaces.
- Open plan dining/living room.
- Communal bicycle storage.
- Bathroom with bath and shower.



Approximate Gross Internal Area = 65.9 sq m / 709 sq ft



(Not Shown In Actual
Location / Orientation)

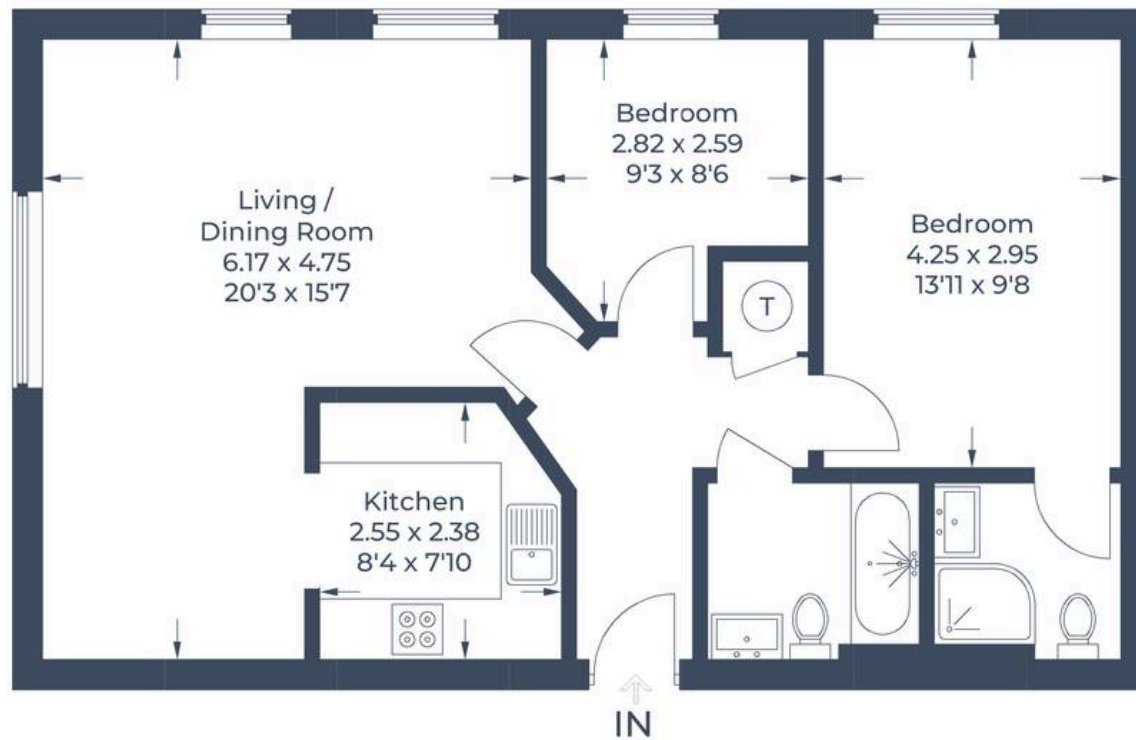


Illustration for identification purposes only,
measurements are approximate, not to scale.

© CJ Property Marketing



Simpsons Witney Branch

4 Langdale Court Witney, Oxfordshire - OX28 6AD

01993 835030 • witney@simpsonsproperty.com • www.simpsonsproperty.com/