



1 The Square Pond Hill, Stonesfield



1 The Square Pond Hill

A delightful end of terrace home located in the popular village of Stonesfield.

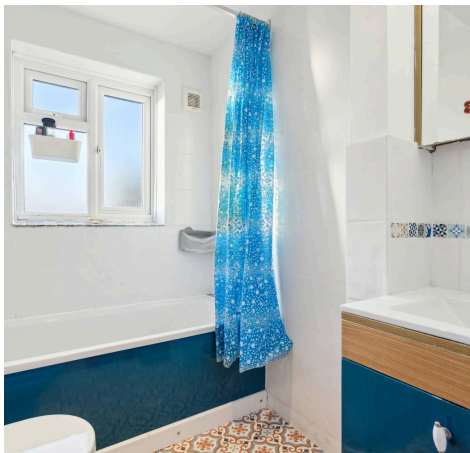
Council Tax band: C

Tenure: Freehold

EPC Energy Efficiency Rating: D

EPC Environmental Impact Rating: D

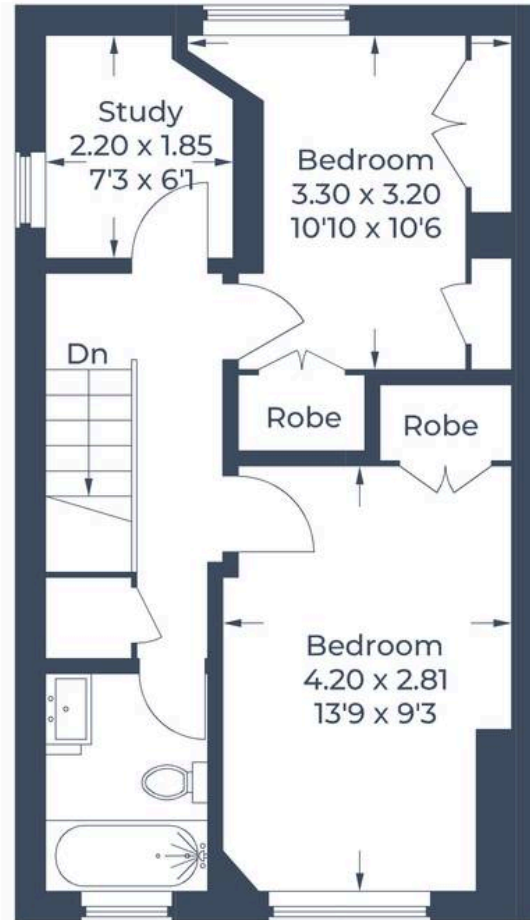
- A well-presented two-bedroom end of terrace home with first floor study which could be used as a third bedroom.
- Fireplace with woodburning stove.
- Popular village location.
- Detached garage and off-street parking.
- Westerly facing courtyard garden.
- Modern bathroom with bath and shower.



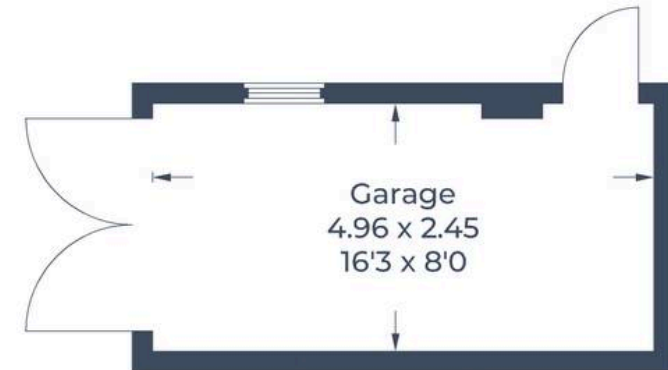
Approximate Gross Internal Area
Ground Floor = 40.8 sq m / 439 sq ft
First Floor = 38.9 sq m / 419 sq ft
Garage = 12.1 sq m / 130 sq ft
Total = 91.8 sq m / 988 sq ft



Ground Floor



First Floor



(Not Shown In Actual
Location / Orientation)



Simpsons Witney Branch

4 Langdale Court Witney, Oxfordshire - OX28 6AD

01993 835030 • witney@simpsonsproperty.com • www.simpsonsproperty.com/