



2 Manor Road, Witney



2 Manor Road

A beautifully presented three-bedroom end of terrace home located on the popular Cogges development within walking distance of all local amenities.

Council Tax band: C

Tenure: Freehold

EPC Energy Efficiency Rating: C


EPC Environmental Impact Rating: C

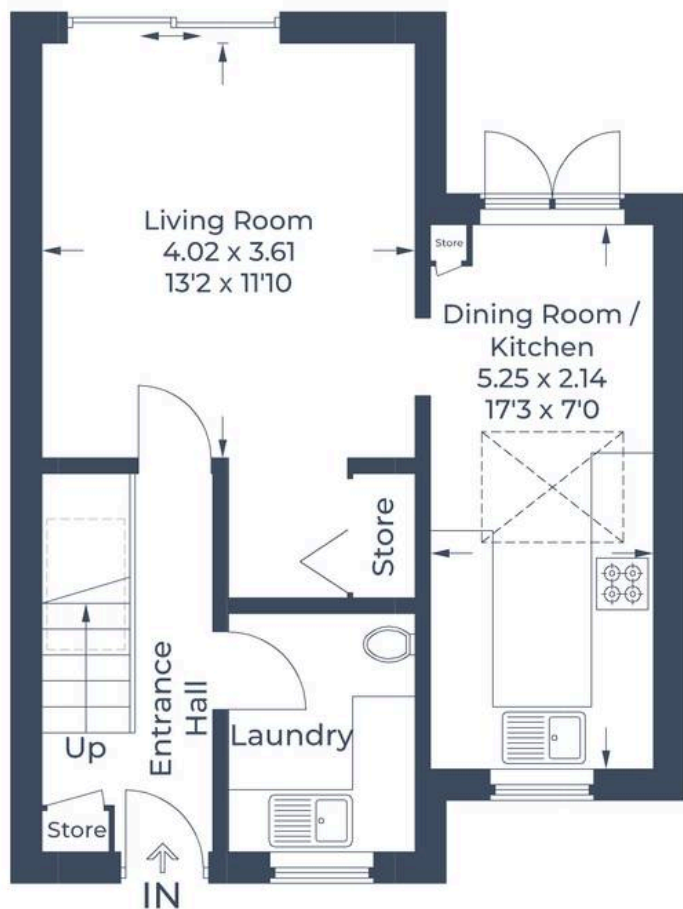
- A beautifully presented three-bedroom end of terrace home located on the popular Cogges development.
- Westerly facing garden with large shed and decking.
- Modern kitchen/dining room with doors leading to the garden.
- Two double bedrooms, one with ensuite plus an additional single bedroom.
- Driveway parking.
- Located within walking distance of local amenities including schools, shops, pubs, restaurants and public transport links.



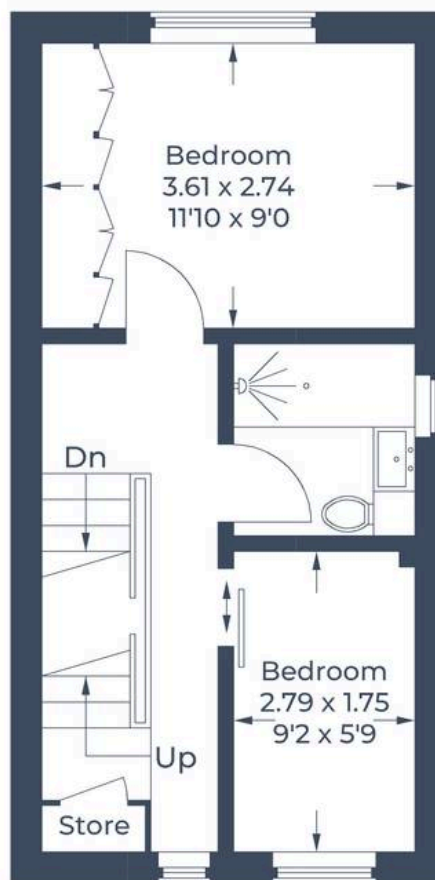
Approximate Gross Internal Area
 Ground Floor = 40.6 sq m / 437 sq ft
 First Floor = 28.1 sq m / 302 sq ft
 Second Floor = 17.3 sq m / 186 sq ft
 (Excluding Eaves Storage)
 Total = 86.0 sq m / 925 sq ft



 = Reduced headroom below 1.5m / 5'0



Ground Floor



First Floor



Second Floor



Simpsons Witney Branch

4 Langdale Court Witney, Oxfordshire - OX28 6AD

01993 835030 • witney@simpsonsproperty.com • www.simpsonsproperty.com/