



2 Brook Lane, Witney



2 Brook Lane

A beautifully presented four-bedroom detached home located on the popular Madley Park development in a peaceful position.

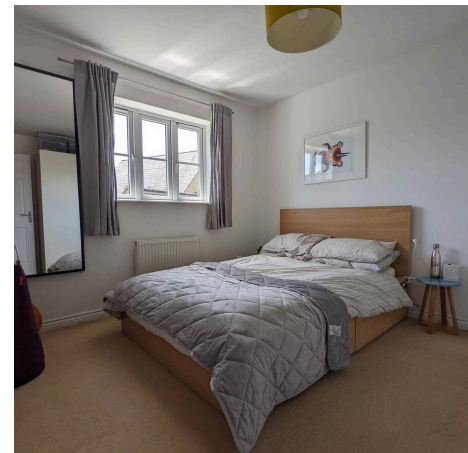
Council Tax band: E

Tenure: Freehold

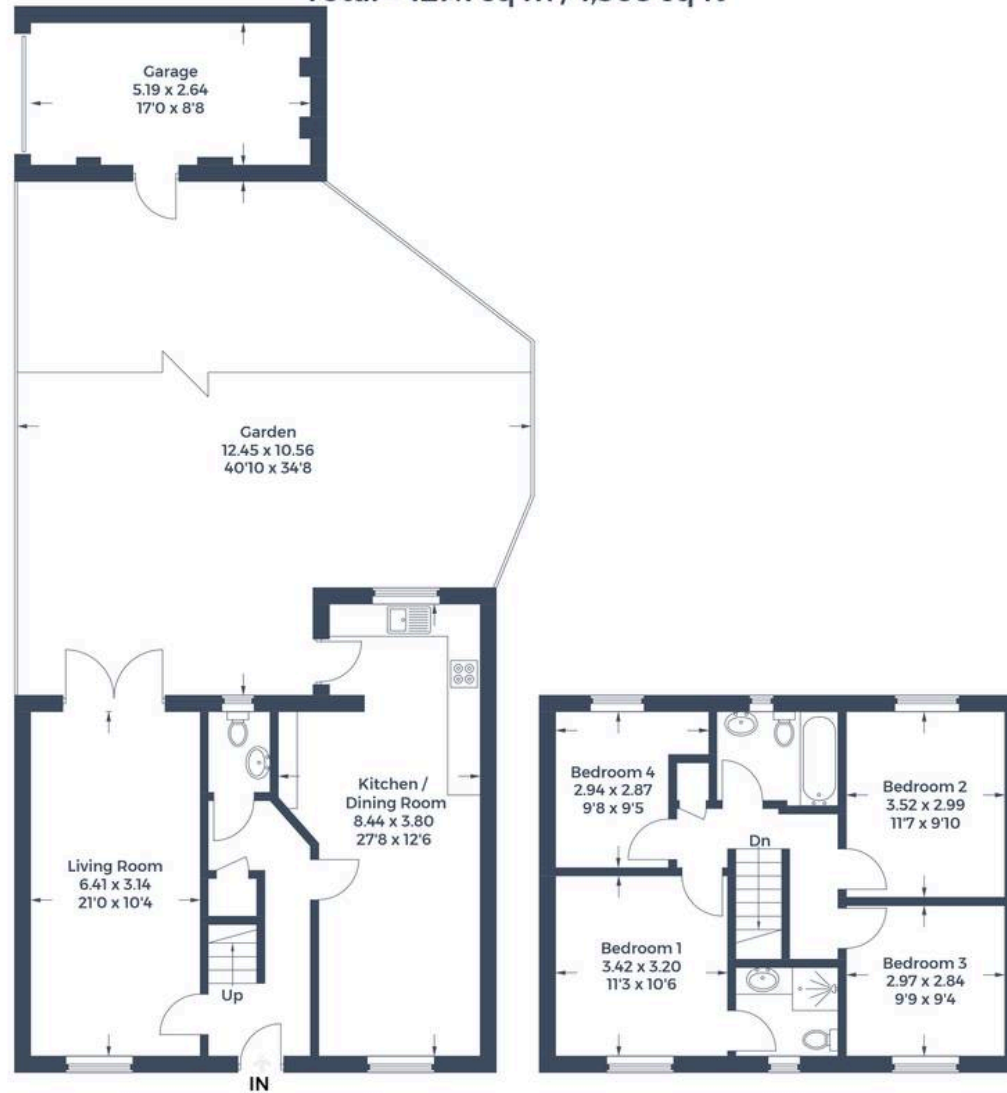
EPC Energy Efficiency Rating: C

EPC Environmental Impact Rating:

- Impressive four-bedroom detached home located in a peaceful position on the popular Madley Park development.
- Open plan kitchen/dining room with integrated appliances.
- Beautifully landscaped south-westerly facing garden with decking and mature trees and shrubs.
- Garage and driveway parking.
- Four bedrooms and family bathroom.
- Master bedroom with ensuite.



Approximate Gross Internal Area
Ground Floor = 59.6 sq m / 641 sq ft
First Floor = 53.4 sq m / 575 sq ft
Garage = 14.1 sq m / 152 sq ft
Total = 127.1 sq m / 1,368 sq ft



Ground Floor

First Floor

This plan is for layout guidance only. Not drawn to scale unless stated. Windows and door openings are approximate. Whilst every care is taken in the preparation of this plan, please check all dimensions, shapes and compass bearings before making any decisions reliant upon them.



Simpsons Witney Branch

4 Langdale Court Witney, Oxfordshire - OX28 6AD

01993 835030 • witney@simpsonsproperty.com • www.simpsonsproperty.com/