



15 Manor Grove, Oxfordshire

Oxfordshire

Simpsons

The Proactive Agent

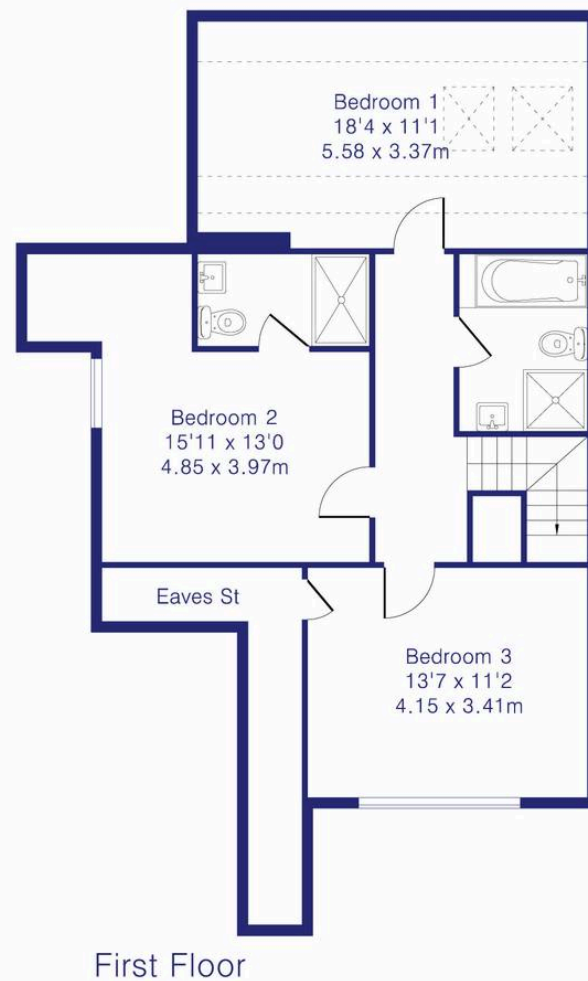
Guide Price **£700,000**



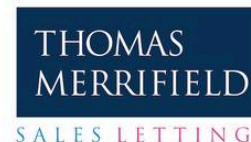
SCAN THE
QR CODE
FOR DETAILS



Approximate Gross Internal Area 1685 sq ft – 157 sq m
 Ground Floor Area 943 sq ft – 88 sq m
 First Floor Area 742 sq ft – 69 sq m



Although Pink Plan Ltd ensures the highest level of accuracy, measurements of doors, windows and rooms are approximate and no responsibility is taken for error, omission or misstatement. These plans are for representation purposes only as defined by RICS code of measuring practise. No guarantee is given on total square footage of the property within this plan. The figure icon is for initial guidance only and should not be relied on as a basis of valuation.



15 Manor Grove

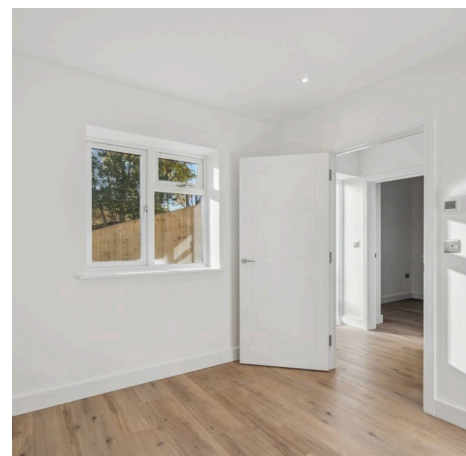
Oxfordshire

A stylish, recently completed 'one of a kind' new build, family home offering spacious, high quality accommodation, sitting on a private plot in a 'non estate location' in the village of Kennington.

Council Tax band: F

Tenure: Freehold

- A stylish four bedroom, new build family home in the Oxfordshire village of Kennington.
- Contemporary fitted kitchen with three leaf bi-fold doors opening onto the garden patio. Centre piece Quartz 'island' and work surface.
- Four well proportioned bedrooms with a versatile home office/study, ideal for use as an occasional fifth bedroom.
- High quality 'wood effect' flooring throughout the ground floor, fully carpeted first floor with tiled bathroom suites.
- Energy efficient Air Source Heat Pump central heating fuelling first floor radiators, complimented by underfloor heating on the ground floor.
- Ready for immediate occupation with no onward chain complication.



SCAN THE
QR CODE
TO BOOK
YOUR VIEWING



