



27 Woodlands Road, Witney



27 Woodlands Road

A wonderful opportunity to purchase this stunning four-bedroom detached home which has been much improved by the current owners. The property is located within one of the most sought-after positions in Witney with Wood Green school situated just over 200 yards away.

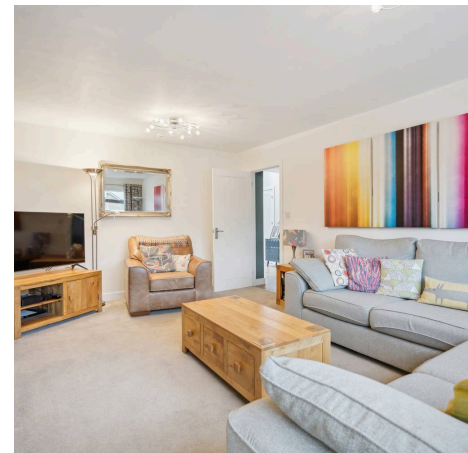
Council Tax band: F

Tenure: Freehold

EPC Energy Efficiency Rating: D

EPC Environmental Impact Rating: E

- An exceptional and much improved four-bedroom detached home situated within one of the most sought-after locations in Witney.
- Spacious open plan sitting/dining room with dual aspect logburner.
- Open plan kitchen/family room with kitchen benefitting from integrated appliances, granite worktop and kitchen island.
- Bi-fold doors leading out to the rear garden from the kitchen/family room.
- Four double bedrooms, master with triple wardrobe and ensuite.
- Off street parking for multiple cars.



Approximate Gross Internal Area
 Ground Floor = 126.9 sq m / 1366 sq ft
 (Including Garage)
 First Floor = 85.8 sq m / 923 sq ft
 Total = 212.7 sq m / 2289 sq ft

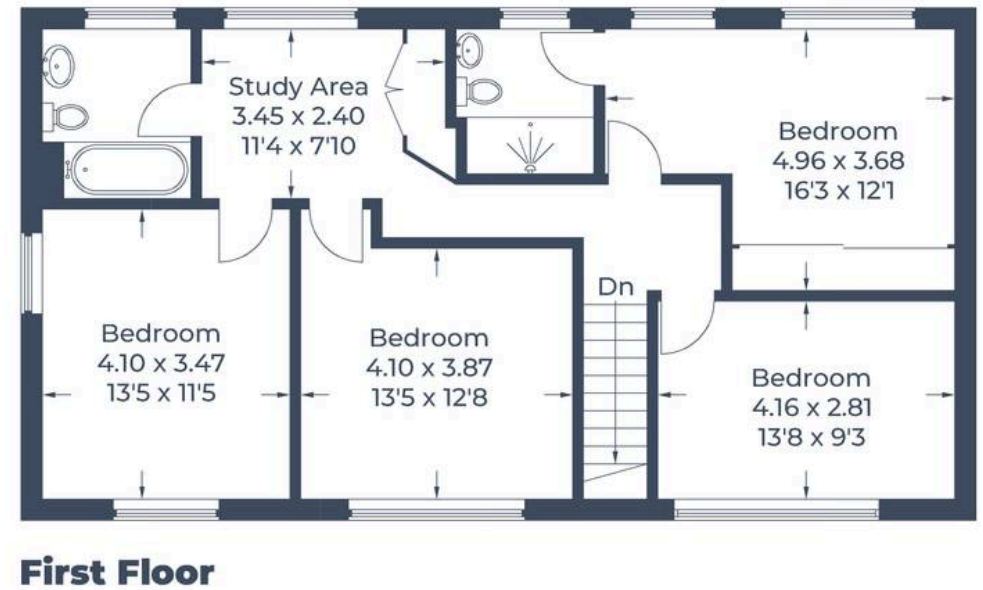
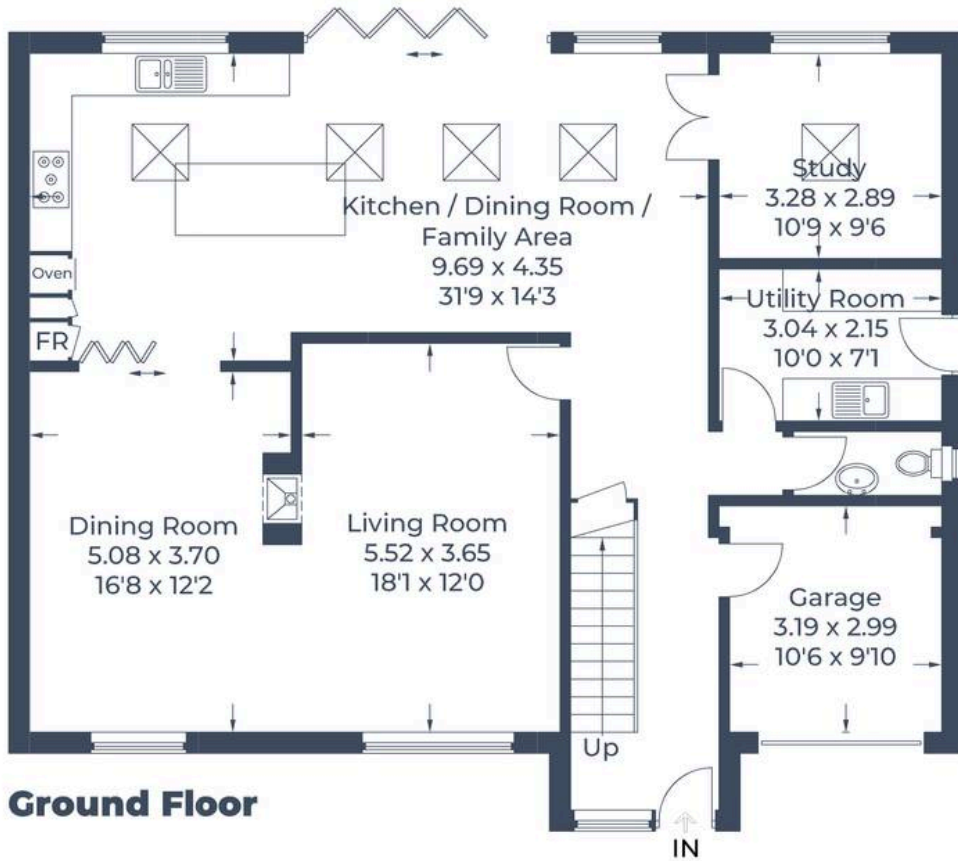


Illustration for identification purposes only,
 measurements are approximate, not to scale.



Simpsons Witney Branch

4 Langdale Court Witney, Oxfordshire - OX28 6AD

01993 835030 • witney@simpsonsproperty.com • www.simpsonsproperty.com/