



2 Beech Lane, Abingdon

Abingdon

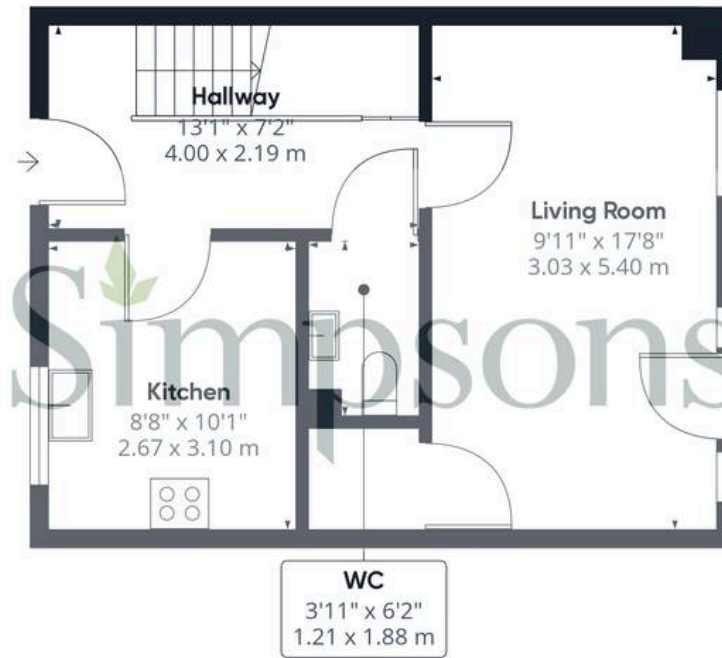
Simpsons
The Proactive Agent

£325,000



SCAN THE
QR CODE
FOR DETAILS





Floor 0



Floor 1

Approximate total area⁽¹⁾

778.02 ft²

72.28 m²

(1) Excluding balconies and terraces

While every attempt has been made to ensure accuracy, all measurements are approximate, not to scale. This floor plan is for illustrative purposes only.

Calculations are based on RICS IPMS 3C standard.

GIRAFFE 360

2 Beech Lane

Abingdon, Abingdon

For sale with no onward chain, a well proportioned two bedroom home with a larger than average rear garden.

Council Tax band: C

Tenure: Freehold

- A two double bedroom home located in a small 'off shoot' cul de sac on Sellwood Road in North Abingdon.
- Larger than average rear garden.
- Well proportioned kitchen with sufficient space for dining table and chairs.



SCAN THE
QR CODE
TO BOOK
YOUR VIEWING

