



2 Lydbrook Cottages Townsend, West Hanney

Wantage

Simpsons
The Proactive Agent

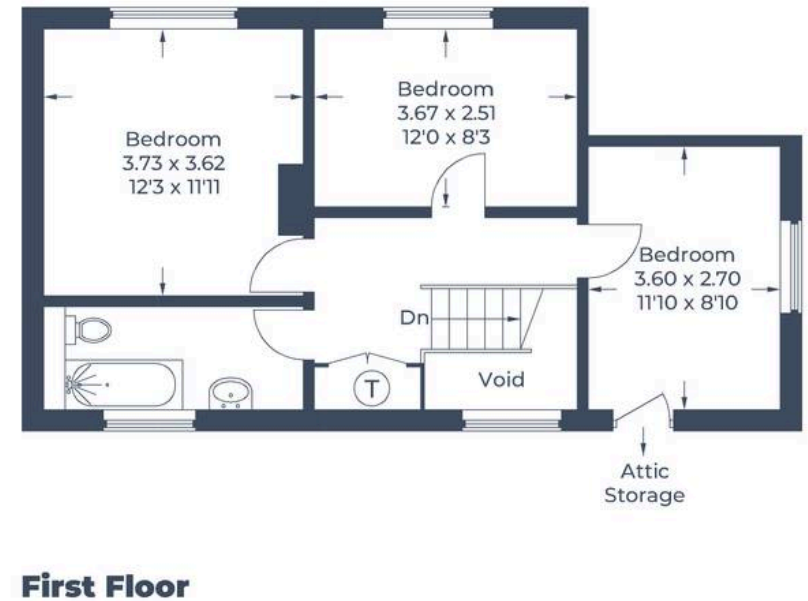
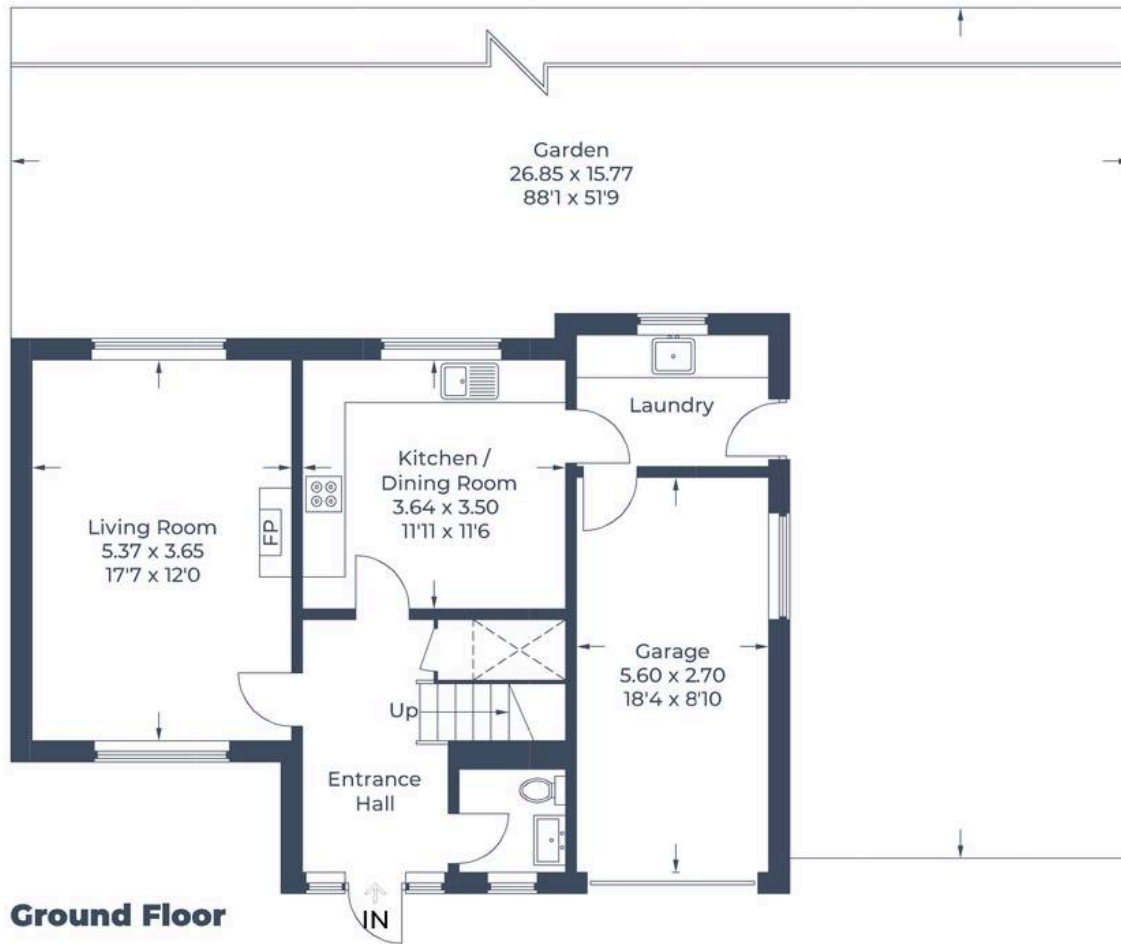
Guide Price **£470,000**



SCAN THE
QR CODE
FOR DETAILS



Approximate Gross Internal Area
 Ground Floor = 68.7 sq m / 739 sq ft
 First Floor = 48.1 sq m / 518 sq ft
 Total = 116.8 sq m / 1,257 sq ft
 (Including Garage & Excluding Void)



2 Lydbrook Cottages Townsend

West Hanney, Wantage

A three bedroom semi-detached family home on the edge of the village of West Hanney with beautiful surrounding countryside views and no onward chain.

Council Tax band: TBD

Tenure: Freehold

- Stunning Location With Surrounding Countryside Views
- No Onward Chain
- Large South Facing Garden Overlooking Fields
- Integral Garage & Off-street Parking For Multiple Cars



SCAN THE
QR CODE
TO BOOK
YOUR VIEWING

