



28 Mill Stream Court, Abingdon

Abingdon

Simpsons
The Pro**active** Agent

Guide Price **£195,000**



SCAN THE
QR CODE
FOR DETAILS

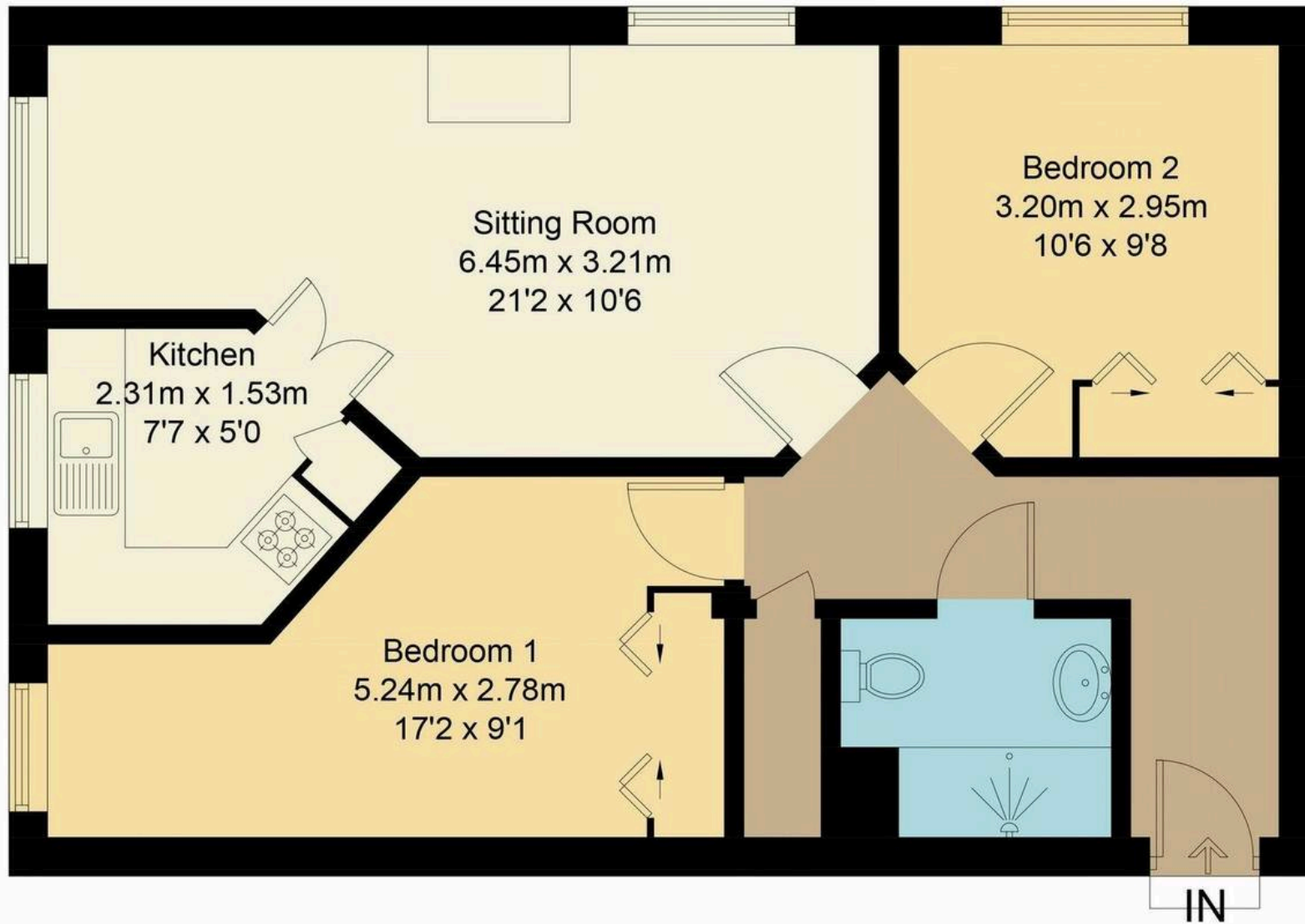


Mill Stream Court, OX14

Approximate Gross Internal Area = 58.9 sq m / 634 sq ft



Second Floor



28 Mill Stream Court

Abingdon, Abingdon

Outstanding second floor retirement apartment,
offered for sale with no onward chain.

Council Tax band: D

Tenure: Leasehold

- Retirement apartment, for over 55's, within a short walk of Abingdon Town Centre.
- 98 Year leasehold term, £4,735 per year service charge, £643 per year ground rent.
- A two double bedroom, second floor apartment, with 'lift/elevator' access.
- Well kept carpets and immaculate decoration.
- Resident lounge with regular entertainment. Well kept gardens overlooking the River Ock, in addition to a terrace/patio.
- Secure entry with onsite manageress.
- No onward chain.

