



49 Jackman Close, Abingdon

Abingdon

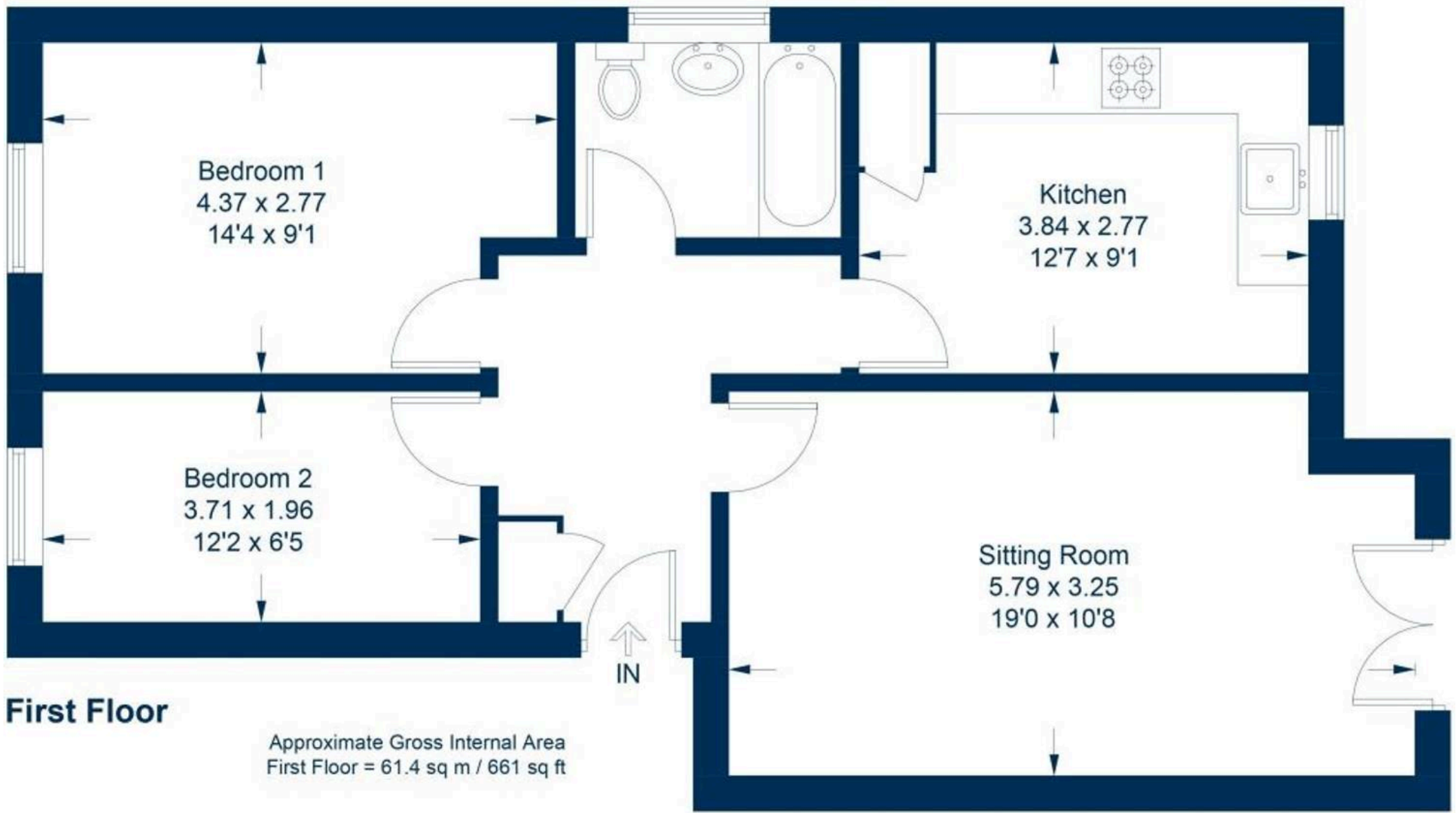
Simpsons
The Proactive Agent

Guide Price **£240,000**



SCAN THE
QR CODE
FOR DETAILS





This plan is for layout guidance only. Not drawn to scale unless stated. Windows and door openings are approximate. Whilst every care is taken in the preparation of this plan, please check all dimensions, shapes and compass bearings before making any decisions reliant upon them.

49 Jackman Close

Abingdon, Abingdon

Beautifully refurbished first floor apartment located a short walk from the Town Centre with allocated parking and further visitor spaces.

Council Tax band: C

Tenure: Leasehold

- A superb, larger design, first floor apartment refurbished and redecorated to an exceptional standard, offered for sale with no onward chain.
- Kitchen/breakfast room, fully refurbished with a range of built in and free standing appliances, along with space for dining table and chairs.
- Recently refitted bathroom suite with a double width walk in shower.
- Two well proportioned bedrooms.
- Sitting room with views from the Juliet Balcony across well kept gardens.
- 155 year leasehold term, service charge circa £1,600 per year, no ground rent payable.
- NO ONWARD CHAIN.



SCAN THE
QR CODE
TO BOOK
YOUR VIEWING

