



491 Thorney Leys, Witney





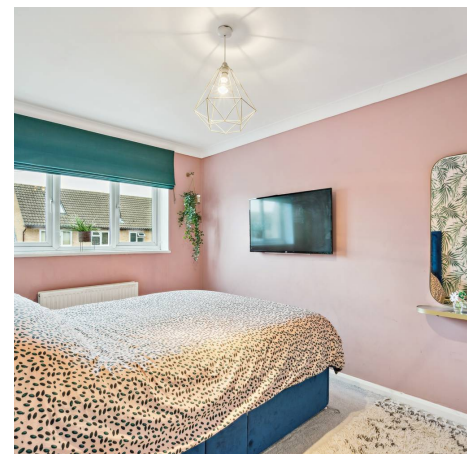
## 491 Thorney Leys

A well presented and much improved three/four bedroom detached home located on the popular Thorney Leys development.

Council Tax band: D

Tenure: Freehold

- Neatly presented and much improved three/four bedroom detached home located on the popular Thorney Leys development.
- Fitted kitchen with integrated appliances including oven, microwave, fridge/freezer and dishwasher.
- Separate utility room with adjoining ground floor shower room.
- Open plan kitchen/dining/family room with door leading to rear garden.
- Additional reception room to the ground floor which could be used as a fourth bedroom.
- Off street parking.





Approximate Gross Internal Area  
Ground Floor = 74.6 sq m / 803 sq ft  
First Floor = 35.5 sq m / 382 sq ft  
Total = 110.1 sq m / 1,185 sq ft

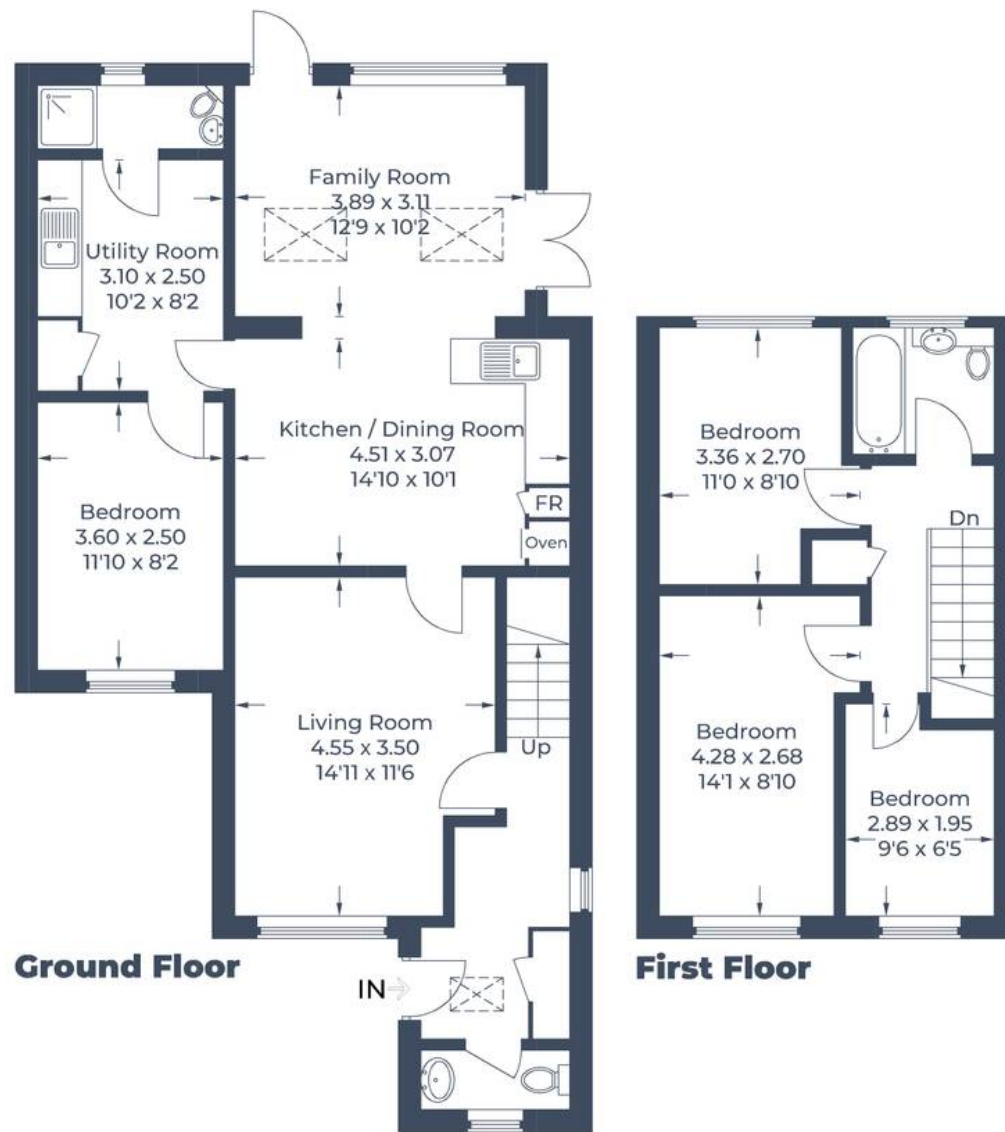


Illustration for identification purposes only,  
measurements are approximate, not to scale.

© CJ Property Marketing





## Simpsons Witney Branch

4 Langdale Court Witney, Oxfordshire - OX28 6AD

01993 835030 • [witney@simpsonsproperty.com](mailto:witney@simpsonsproperty.com) • [www.simpsonsproperty.com/](http://www.simpsonsproperty.com/)