



27 Woodley Green, Witney



27 Woodley Green

A detached family home located in a peaceful position on the edge of the Madley Park development.

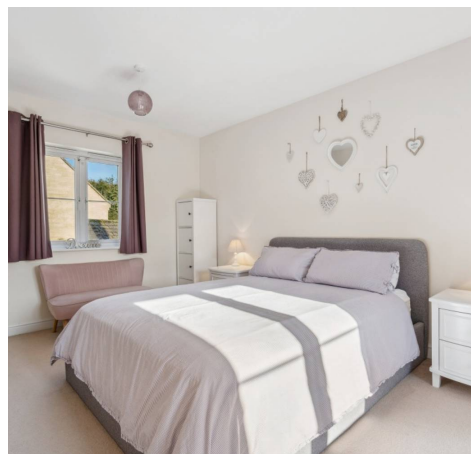
Council Tax band: D

Tenure: Freehold

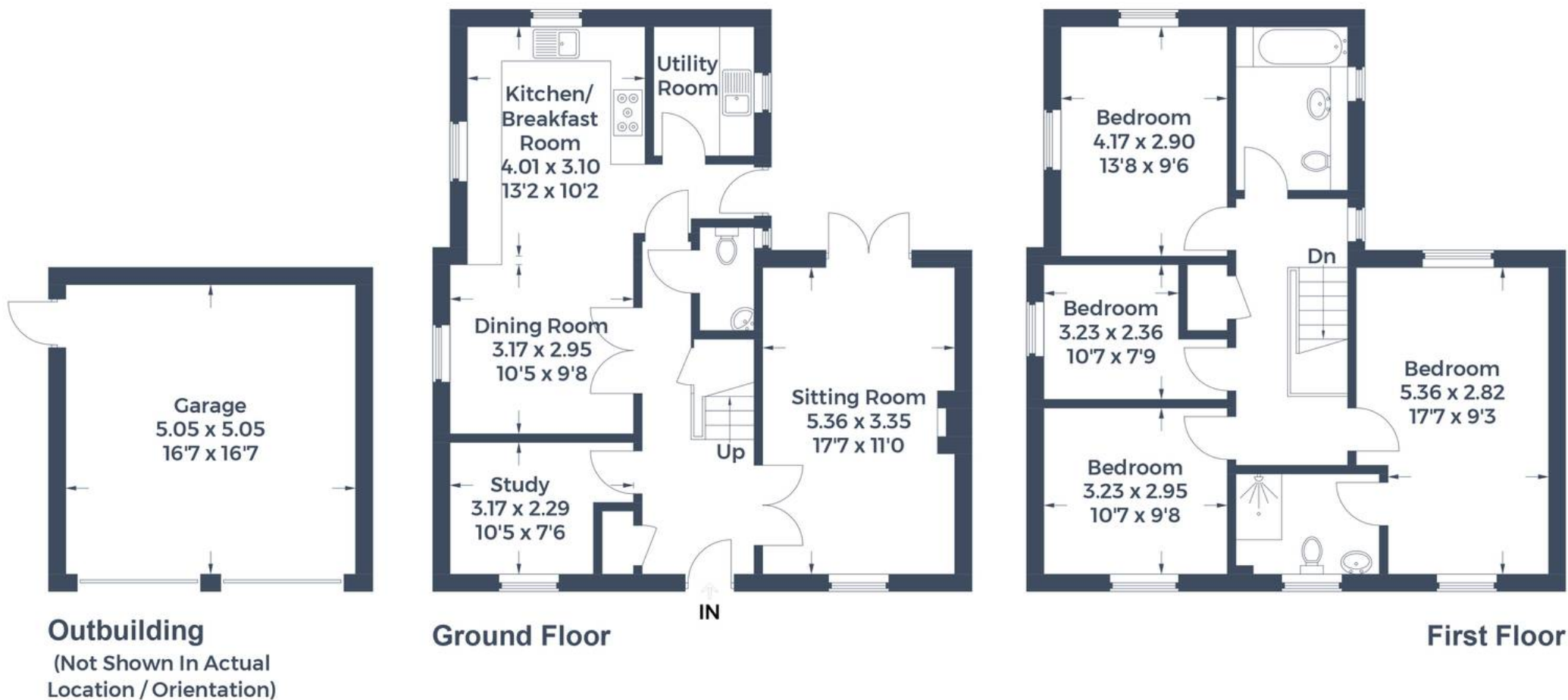
EPC Energy Efficiency Rating: C

EPC Environmental Impact Rating: C

- Beautifully presented four bedroom detached family home located in a peaceful position on the edge of the desirable Madley Park development.
- Double garage with additional parking spaces.
- Open plan kitchen/dining room with integrated appliances.
- Sitting room with electric fire and doors leading out to the garden.
- Three double bedrooms, master bedroom with ensuite.
- Separate study to the ground floor.



Approximate Gross Internal Area
 Ground Floor = 68.6 sq m / 738 sq ft
 First Floor = 65.9 sq m / 709 sq ft
 Garage = 25.6 sq m / 275 sq ft
 Total = 160.1 sq m / 1,722 sq ft



This plan is for layout guidance only. Not drawn to scale unless stated. Windows and door openings are approximate. Whilst every care is taken in the preparation of this plan, please check all dimensions, shapes and compass bearings before making any decisions reliant upon them.



Simpsons Witney Branch

4 Langdale Court Witney, Oxfordshire - OX28 6AD

01993 835030 • witney@simpsonsproperty.com • www.simpsonsproperty.com/