



72 Burford Road, Carterton



72 Burford Road

A fantastic opportunity to purchase this neatly presented two bedroom semi-detached home located within easy walking distance of the town centre.

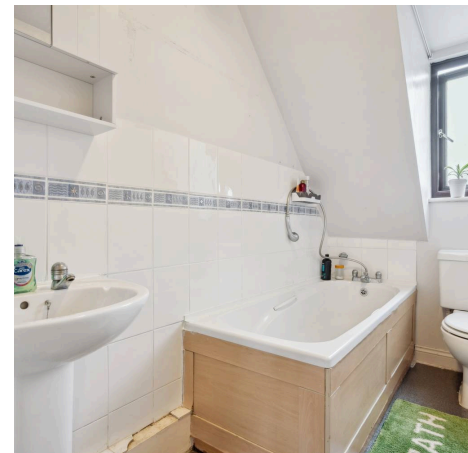
Council Tax band: C

Tenure: Freehold

EPC Energy Efficiency Rating: D

EPC Environmental Impact Rating: D

- Neatly presented two bedroom semi-detached home located within walking distance of the town centre.
- Conservatory with doors leading to garden.
- Two allocated parking spaces.
- Front and rear gardens.
- Two double bedrooms.
- Fitted kitchen and spacious living room.



Approximate Gross Internal Area
Ground Floor = 52.3 sq m / 562 sq ft
First Floor = 28.1 sq m / 302 sq ft
Total = 80.4 sq m / 864 sq ft



Ground Floor

 = Reduced headroom below 1.5m / 5'0



First Floor

Illustration for identification purposes only,
measurements are approximate, not to scale.
© CJ Property Marketing Produced for Simpsons



Simpsons Witney Branch

4 Langdale Court Witney, Oxfordshire - OX28 6AD

01993 835030 • witney@simpsonsproperty.com • www.simpsonsproperty.com/