



20 Wheatfield Drive, Curbridge

Guide Price £350,000



20 Wheatfield Drive

A beautifully presented two-bedroom semi-detached home located on a popular development in Witney.

Council Tax band: C

Tenure: Freehold

EPC Energy Efficiency Rating: B

EPC Environmental Impact Rating: B

- Newly built two-bedroom semi-detached house.
- Off street parking for three cars.
- Kitchen with fitted appliances.
- Two double bedrooms, ensuite and family bathroom.
- Six years structural warranty remaining.
- Walking distance to amenities.

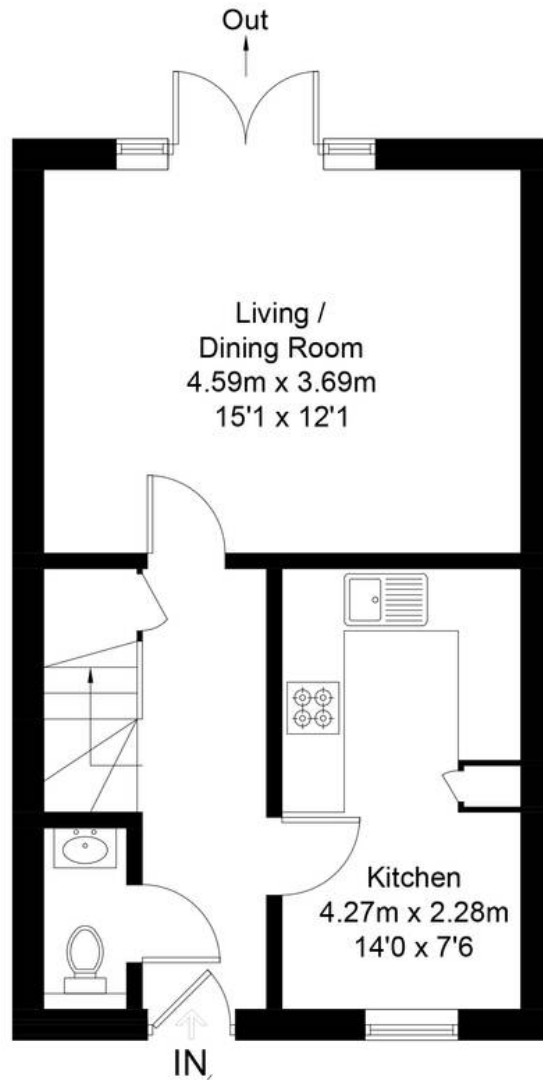




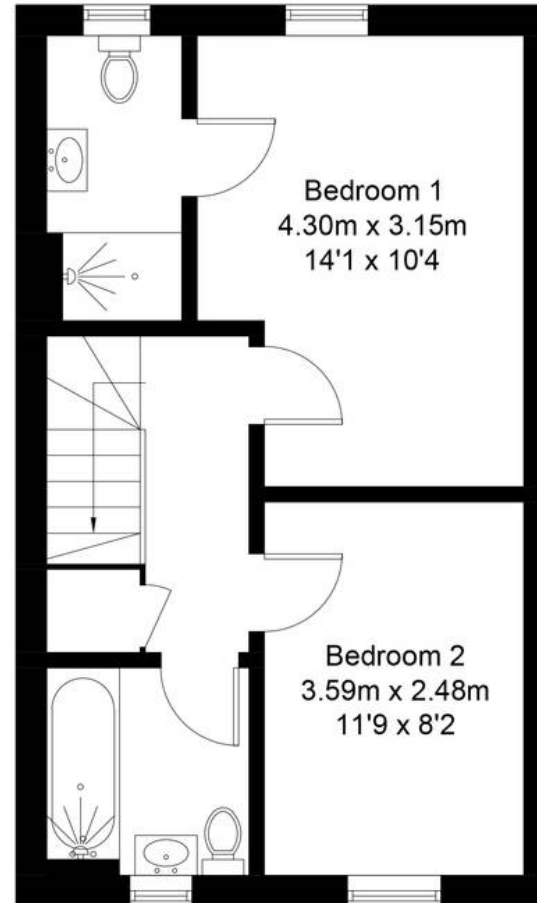
Wheatfield Drive, OX29

Approximate Gross Internal Area = 74.9 sq m / 806 sq ft

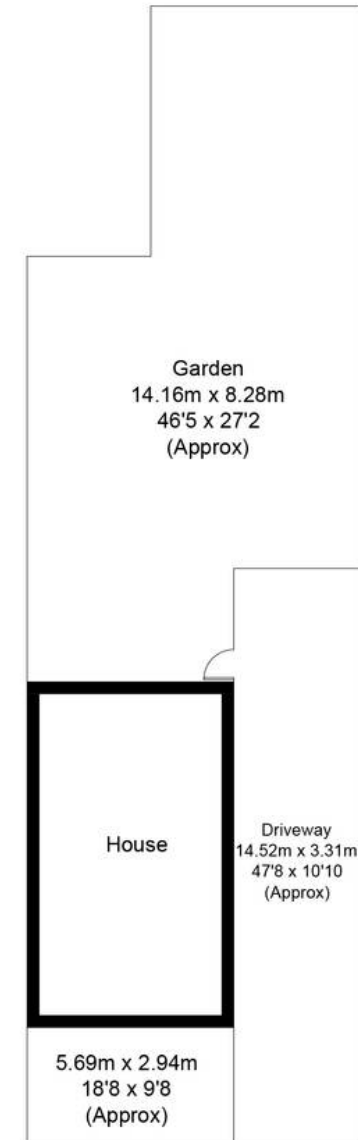
For identification only - Not to scale



Ground Floor



First Floor





Simpsons Witney Branch

4 Langdale Court, Witney - OX28 6AD

01993 835030 • witney@simpsonsproperty.com • www.simpsonsproperty.com/