



Mably Grove, Wantage

Wantage

Simpsons

The Proactive Agent

Guide Price £595,000



SCAN THE
QR CODE
FOR DETAILS



Approximate Gross Internal Area
Ground Floor = 100.1 sq m / 1,077 sq ft
First Floor = 57.0 sq m / 613 sq ft
Total = 157.1 sq m / 1,690 sq ft

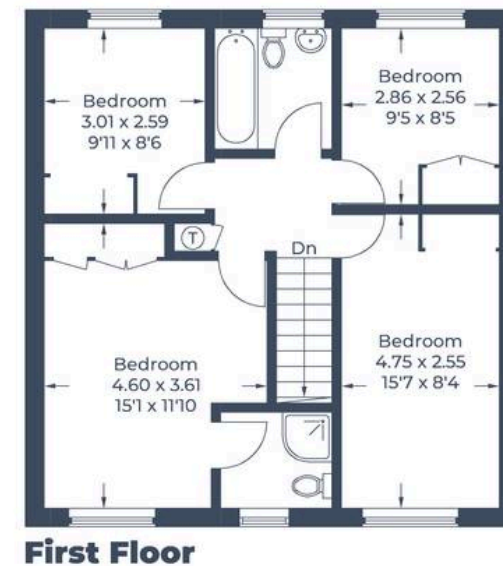
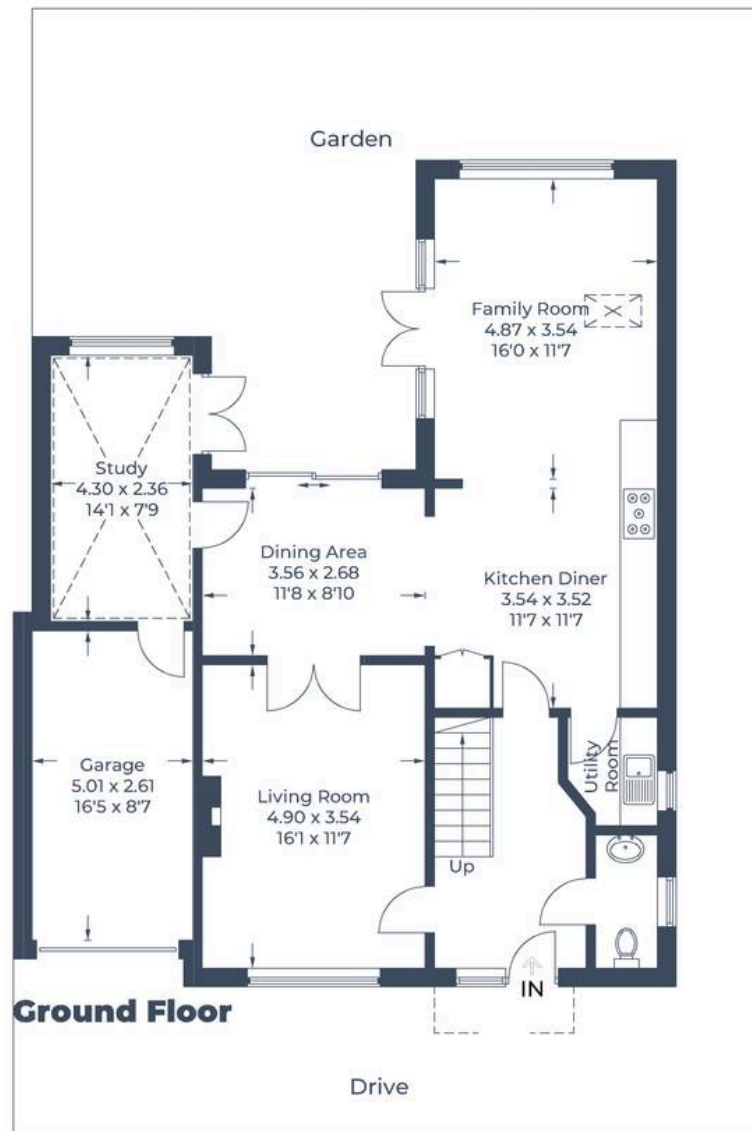


Illustration for identification purposes only,
measurements are approximate, not to scale.

© CJ Property Marketing

Mably Grove

Wantage, Wantage

A beautifully presented and extended family home situated in a highly sort after and quiet cul-de-sac. Council Tax band: E

Tenure: Freehold

- Beautifully Presented And Extended Four Bedroom Home
- Perfectly Positioned Within A Highly Popular Cul-De-Sac
- Open-Plan Kitchen/ Living & Dining
- Two Further Reception Rooms Including A Study To The Ground Floor
- Large Master Bedroom With En-Suite Shower Room
- South-West Facing & Very Private Rear Garden



SCAN THE
QR CODE
TO BOOK
YOUR VIEWING

