



28 Hawksworth Close, Grove

Wantage

Simpsons

The Proactive Agent

In Excess of £280,000



SCAN THE
QR CODE
FOR DETAILS

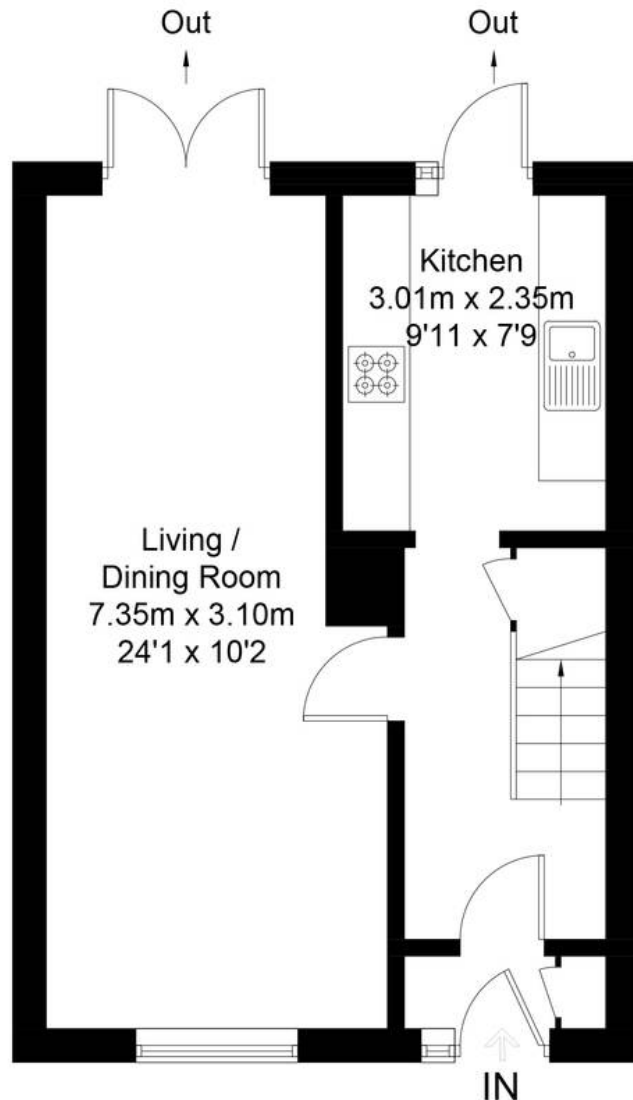




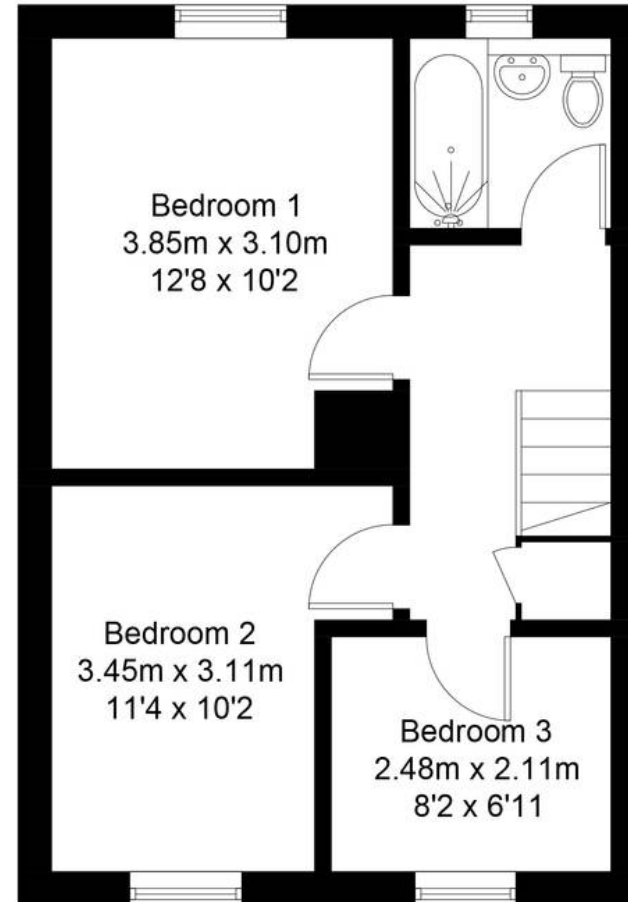
Hawksworth Close, OX12

Approximate Gross Internal Area = 75.0 sq m / 807 sq ft

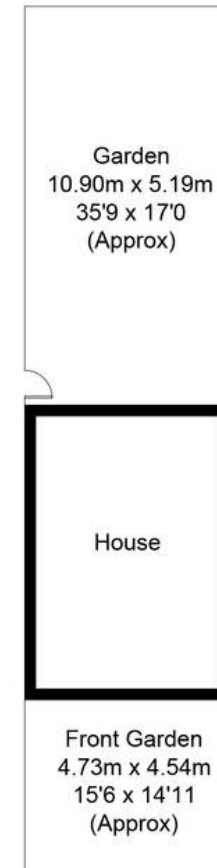
For identification only - Not to scale



Ground Floor



First Floor



28 Hawksworth Close

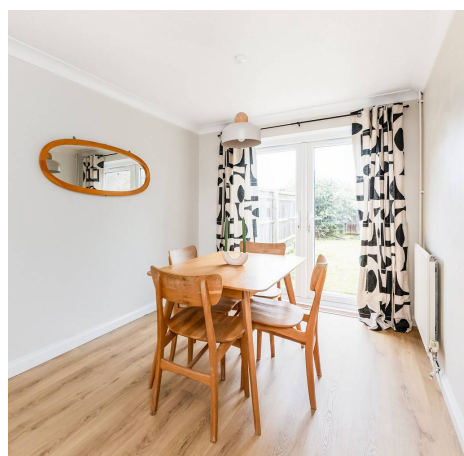
Grove, Wantage

A beautifully presented and recently upgraded three bedroom property in a quiet cul-de-sac with the potential of creating a driveway for off-street parking. Close to shops and amenities and with no onward chain.

Council Tax band: C

Tenure: Freehold

- Beautifully Renovated Throughout
- Open Plan Living/Dining Room
- Large & Private Rear Garden
- Scope For Driveway Parking At The Front Of The Property
- Garage In Block
- No Onward Chain



SCAN THE
QR CODE
TO BOOK
YOUR VIEWING



