



# 1 Chapmans Piece, Burford

Guide Price £795,000



## 1 Chapmans Piece

A wonderful opportunity to purchase a beautiful three bedroom cottage built in Cotswold stone located within walking distance of Burford High Street.

Council Tax band: E

Tenure: Freehold

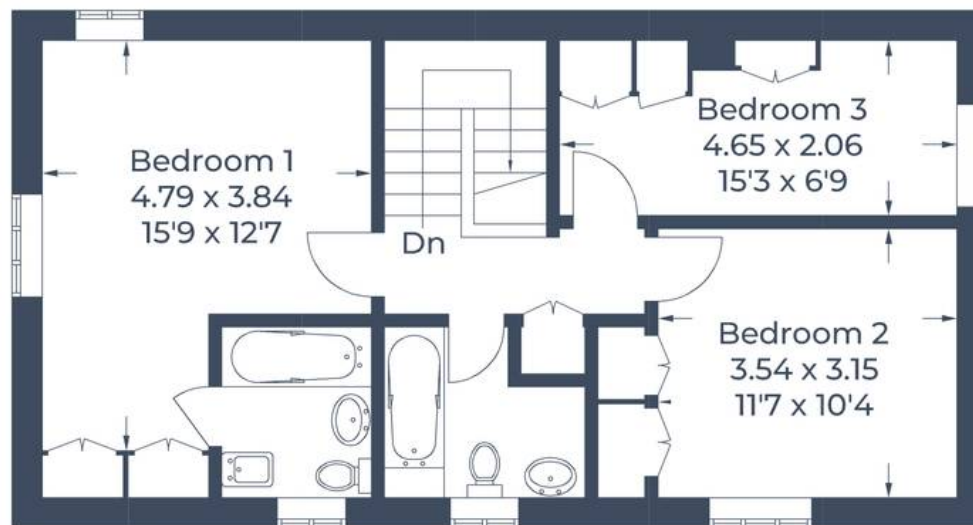
EPC Energy Efficiency Rating: D

EPC Environmental Impact Rating:

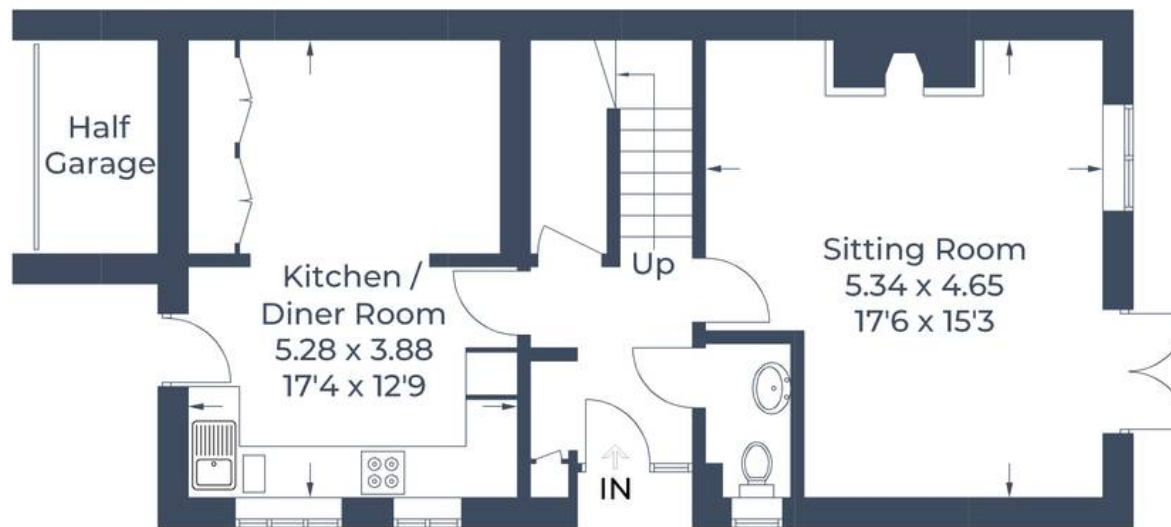
- A beautifully presented three bedroom Cotswold stone cottage located within walking distance of Burford High Street.
- Half-Garage and private off-street parking.
- Open plan kitchen/dining room with integrated appliances.
- Sitting room with fireplace.
- Front and rear courtyard gardens with access to further communal gardens.
- Master bedroom with built in cupboards and ensuite.



Approximate Gross Internal Area = 114.3 sq m / 1,230 sq ft  
(Excluding Half Garage)



**First Floor**



**Ground Floor**

Illustration for identification purposes only,  
measurements are approximate, not to scale.



## Simpsons Witney Branch

4 Langdale Court Witney, Oxfordshire - OX28 6AD

01993 835030 • [witney@simpsonsproperty.com](mailto:witney@simpsonsproperty.com) • [www.simpsonsproperty.com/](http://www.simpsonsproperty.com/)