



145 Harvest Way, Witney

Guide Price £675,000



145 Harvest Way

An impressive five bedroom detached home offered for sale with the certainty of no onward chain. This home is arguably located in one of the best locations on Madley Park at the edge of the development in a peaceful cul-de-sac setting.

Council Tax band: F

Tenure: Freehold

- Offered for sale with the certainty of no onward chain.
- Impressive detached home located in a peaceful cul-de-sac setting on the edge of the popular Madley Park development.
- Fitted kitchen with integrated appliances and separate utility room.
- Double garage with gated parking.
- Master bedroom occupying the entire top floor with dressing room space and ensuite.
- Walkable distance to the town centre offering shops, pubs, supermarkets, primary and secondary schools.





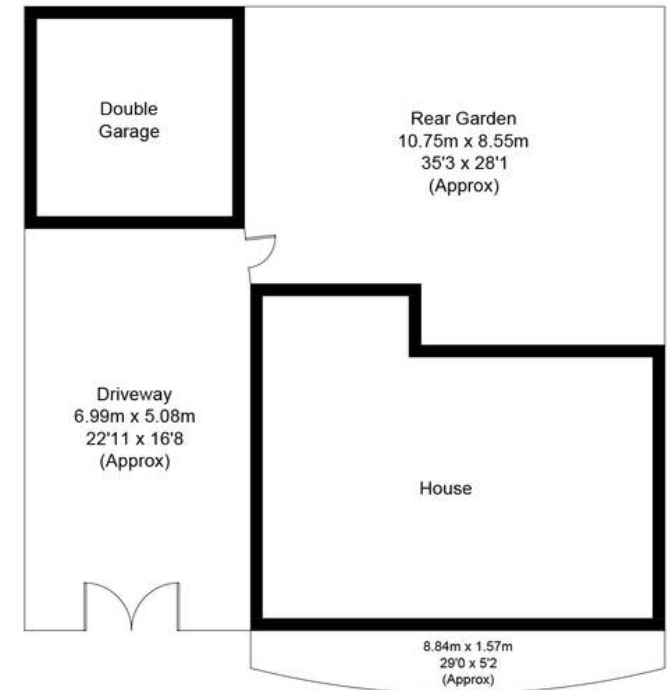
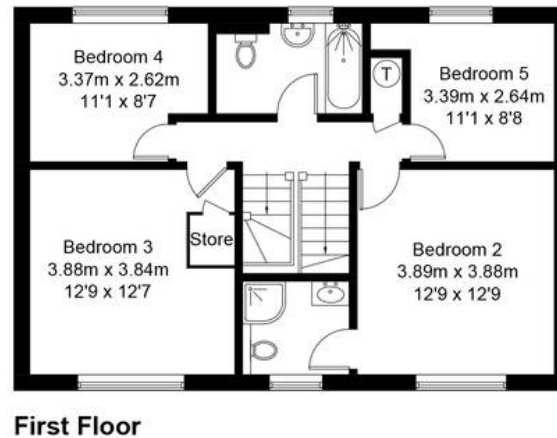
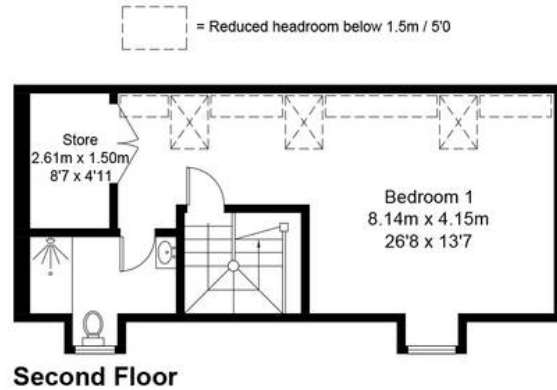
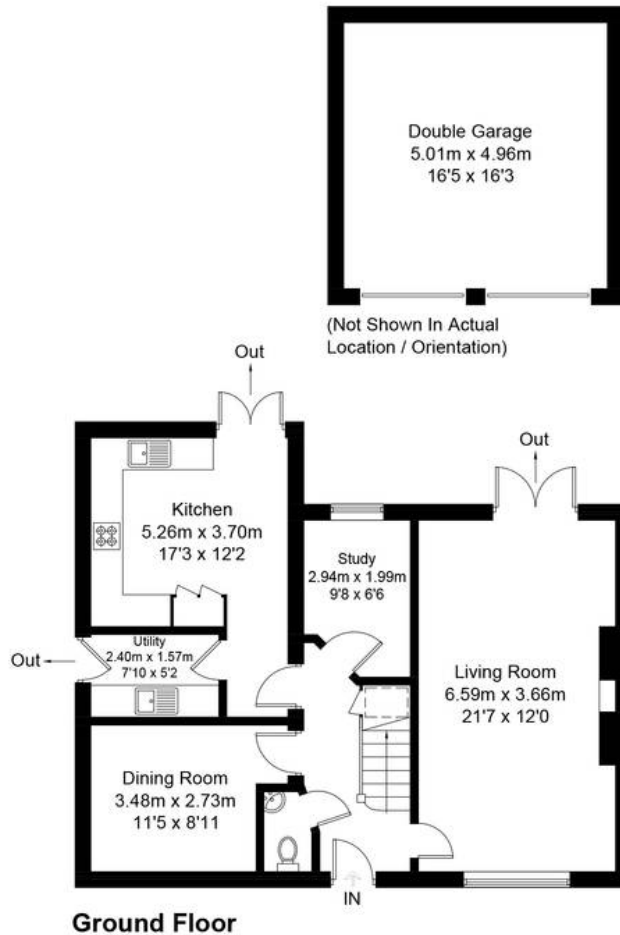
Harvest Way, OX28

Approximate Gross Internal Area = 178.4 sq m / 1920 sq ft

Garage = 25.2 sq m / 271 sq ft

Total = 203.6 sq m / 2191 sq ft

For identification only - Not to scale





Simpsons Witney Branch

4 Langdale Court, Witney - OX28 6AD

01993 835030 • witney@simpsonsproperty.com • www.simpsonsproperty.com/