



2 Parker Close, Brize Norton

Guide Price £300,000



2 Parker Close

A newly built two-bedroom terraced home located on the popular 'Brize Meadow' development in Carterton.

Council Tax band: C

Tenure: Freehold

EPC Energy Efficiency Rating: B

EPC Environmental Impact Rating: B

- Beautifully presented two-bedroom terraced home.
- Kitchen with integrated Bosch appliances
- Two double bedrooms, family bathroom and ensuite.
- Off-street parking for two cars.
- Walking distance to local amenities.
- Five years structural warranty remaining.

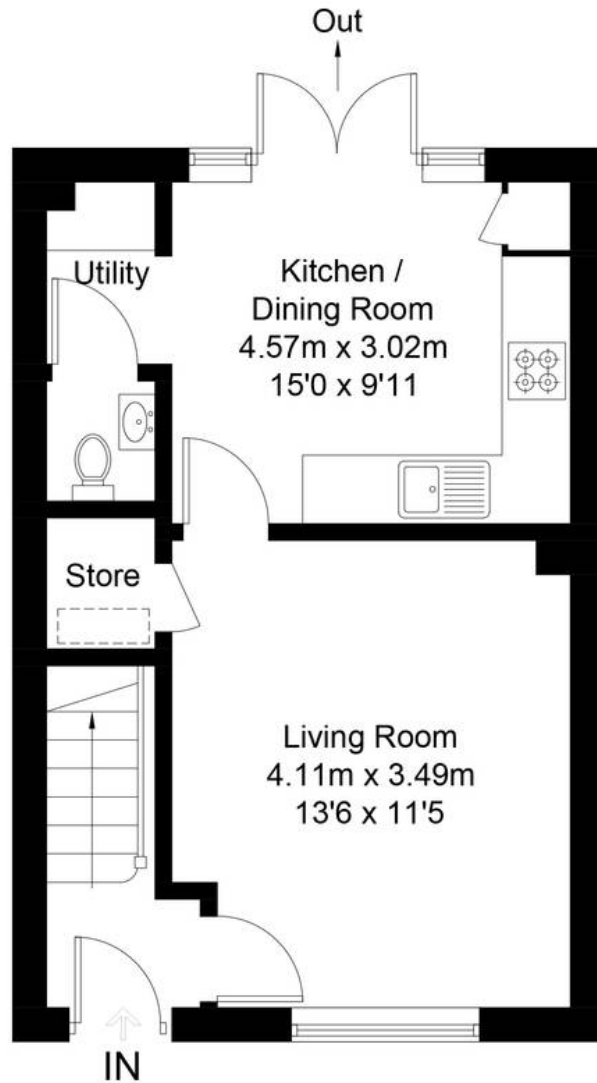




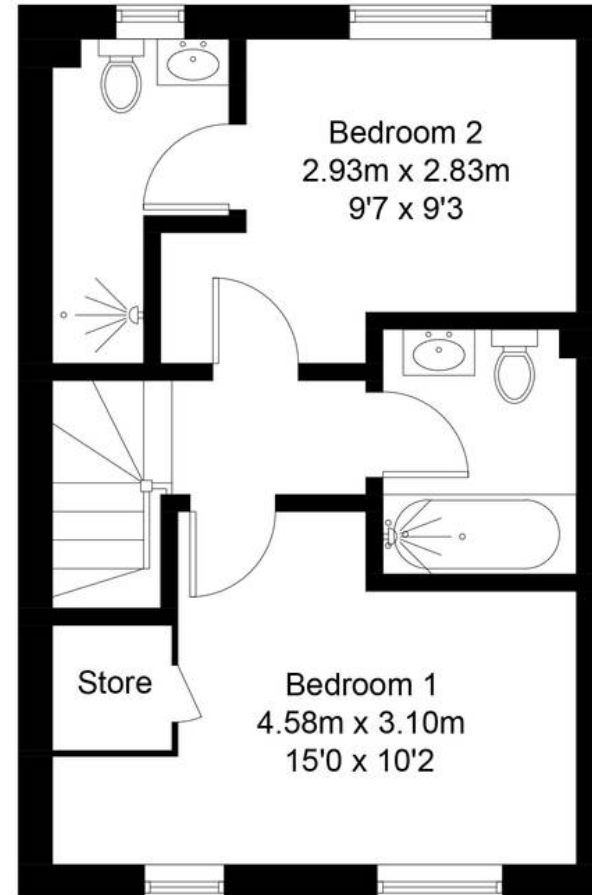
Parker Close, OX18

Approximate Gross Internal Area = 67.0 sq m / 721 sq ft

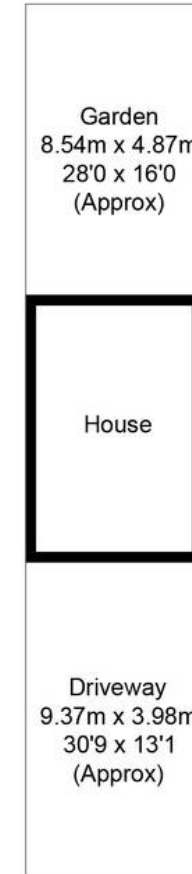
For identification only - Not to scale



Ground Floor



First Floor





Simpsons Witney Branch

4 Langdale Court, Witney - OX28 6AD

01993 835030 • witney@simpsonsproperty.com • www.simpsonsproperty.com/