



19 Skylark Way, Witney

Guide Price £520,000



19 Skylark Way

A beautifully unique four-bedroom detached home located on the popular Kingfisher Meadows development within walking distance of Witney town centre.

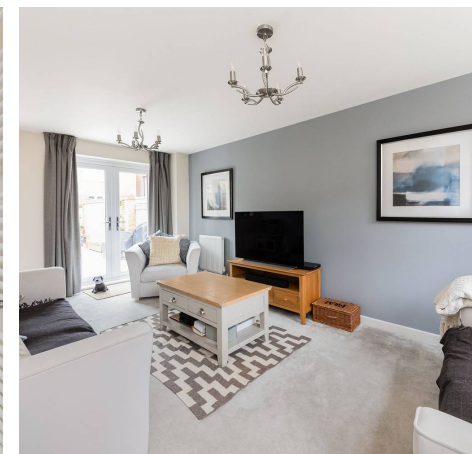
Council Tax band: E

Tenure: Freehold

EPC Energy Efficiency Rating: B

EPC Environmental Impact Rating: B

- Beautifully presented four-bedroom detached home located on the popular Kingfisher Meadows development.
- Landscaped south-westerly facing garden with French doors leading out from the sitting room.
- Master suite to the second floor with dressing room and ensuite.
- Three additional bedrooms and family bathroom.
- Kitchen with fully integrated appliances including washer/dryer, fridge/freezer and dishwasher.
- Garage and driveway parking.





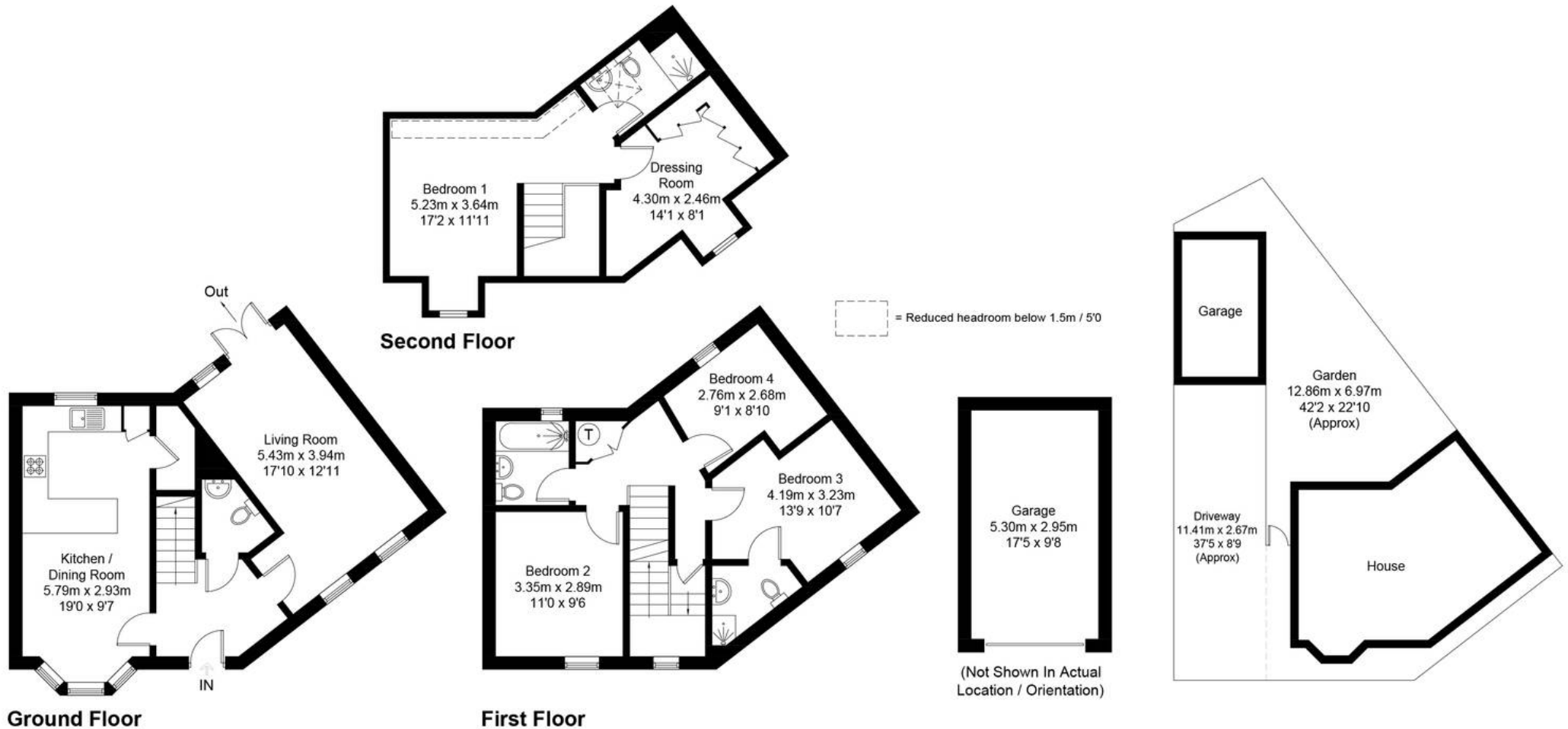
Skylark Way, OX28

Approximate Gross Internal Area = 131.9 sq m / 1420 sq ft

Garage = 15.9 sq m / 171 sq ft

Total = 147.8 sq m / 1591 sq ft

For identification only - Not to scale



Floor plan produced in accordance with RICS Property Measurement Standards.

© Mortimer Photography. Produced for Simpsons.

Unauthorised reproduction prohibited. (ID1119812)



Simpsons Witney Branch

4 Langdale Court, Witney - OX28 6AD

01993 835030 • witney@simpsonsproperty.com • www.simpsonsproperty.com/