



10 Hilliat Fields, Drayton

Abingdon

Simpsons
The Proactive Agent

In Excess of £425,000



SCAN THE
QR CODE
FOR DETAILS



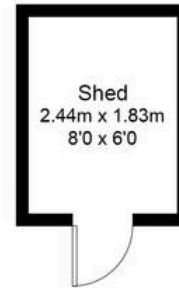


Hilliat Fields, OX14

Approximate Gross Internal Area = 112.4 sq m / 1210 sq ft

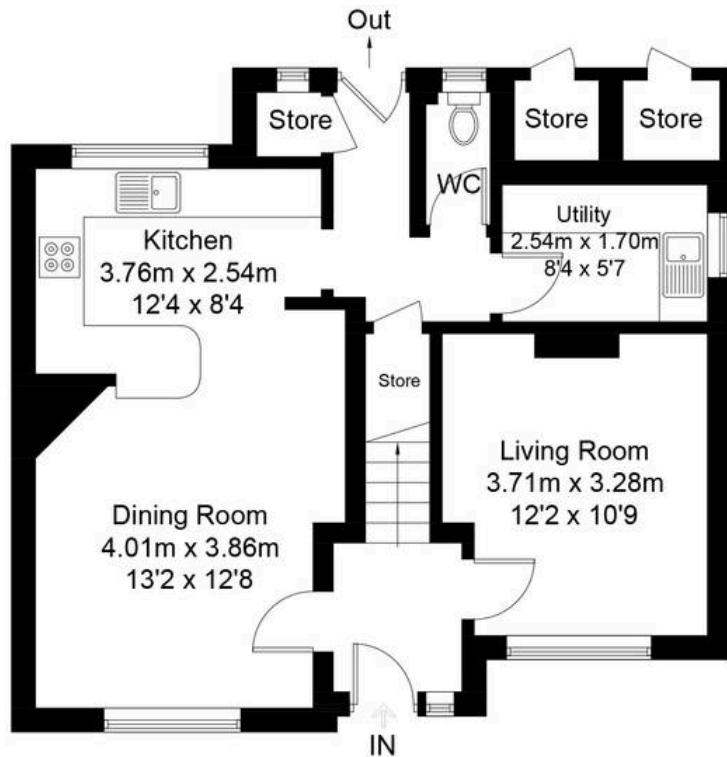
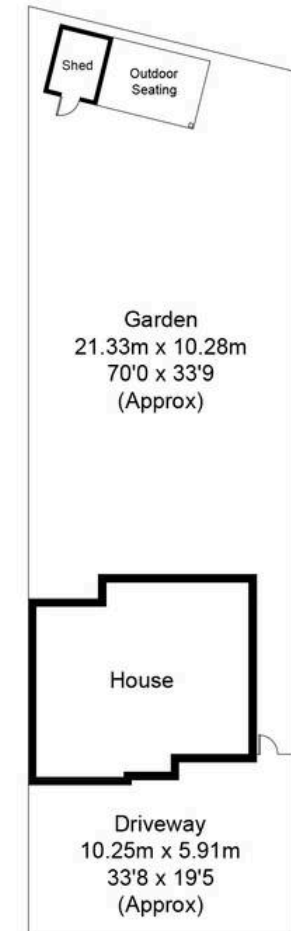
Shed = 4.5 sq m / 48 sq ft

For identification only - Not to scale

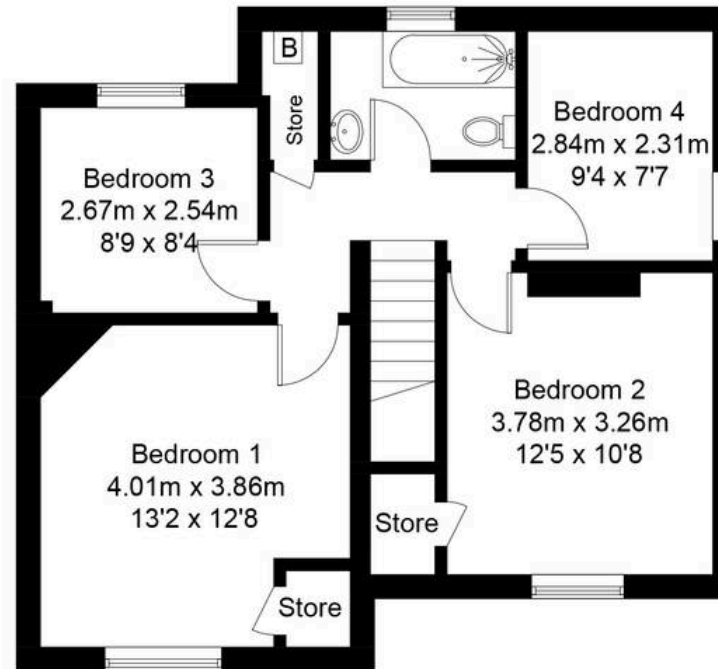


Outbuilding

(Not Shown In Actual Location / Orientation)



Ground Floor



First Floor

10 Hilliat Fields

Drayton, Abingdon

A spacious family home with a modern, open plan kitchen/diner, four bedrooms and a lovely open air garden room overlooking a larger than average South/East facing garden.

Council Tax band: D

Tenure: Freehold

- Located in the village of Drayton, within easy reach of both Abingdon and Didcot Town Centres, a spacious family home which has been modernised by the present owner.
- Walking distance to Drayton Primary School, bus routes to nearby towns and the village shop.
- Spacious, larger than average garden with timber built sheds and covered, open air seating area.
- Modern bathroom suite.
- Useful downstairs WC and separate utility room.
- Recently re-fitted, open plan kitchen, overlooking the rear garden.



SCAN THE
QR CODE
TO BOOK
YOUR VIEWING

