



2 Graydon Close, Milton

Abingdon

Simpsons
The Proactive Agent

Guide Price **£535,000**



SCAN THE
QR CODE
FOR DETAILS





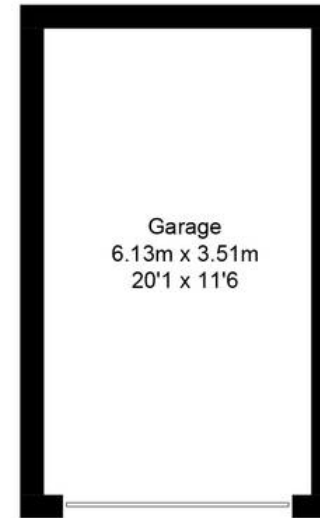
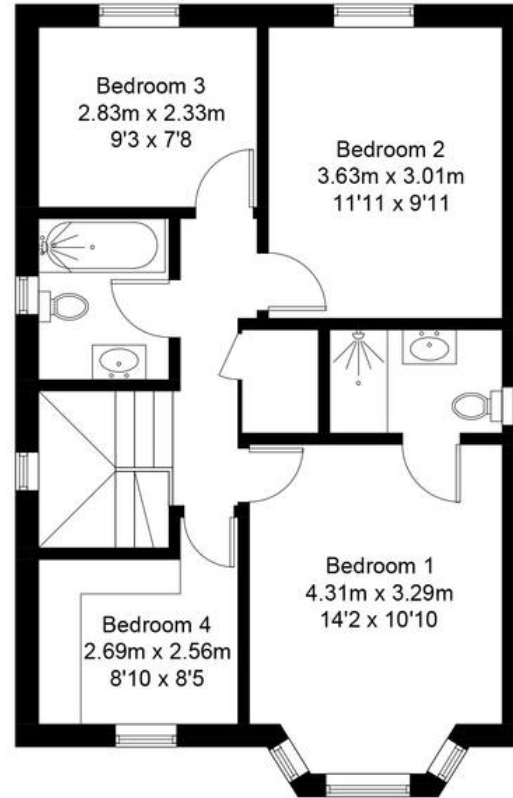
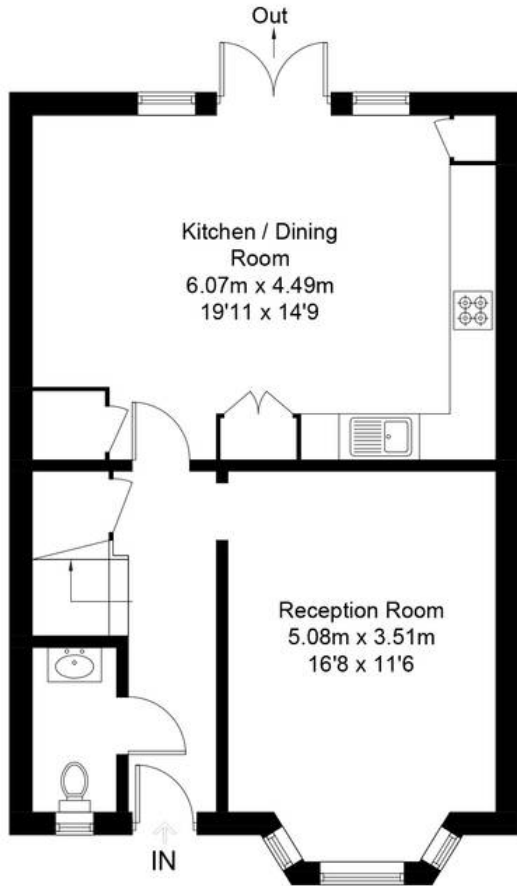
Graydon Close, OX13

Approximate Gross Internal Area = 112.9 sq m / 1215 sq ft

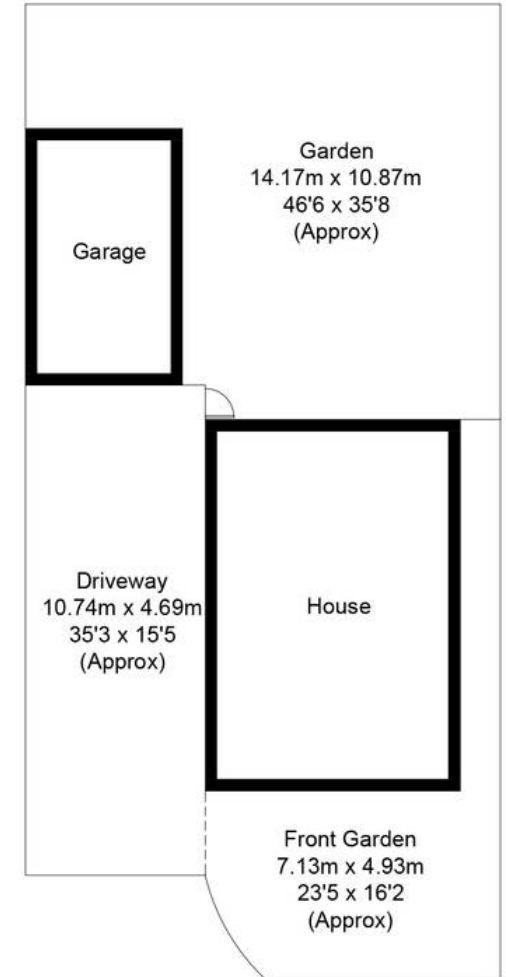
Garage = 21.7 sq m / 234 sq ft

Total = 134.6 sq m / 1449 sq ft

For identification only - Not to scale



(Not Shown In Actual
Location / Orientation)



2 Graydon Close

Milton, Abingdon

Located on this popular Redrow development, this very spacious Heritage style home overlooks a beautiful green and has four bedrooms and two bathrooms.

Council Tax band: E

Tenure: Freehold

- Detached Four Bed Overlooking A Green
- Garage And Off-road Parking
- Good Sized Garden
- Sought After Redrow Heritage Development
- The Garden Will Be Turfed Prior To Purchase



SCAN THE
QR CODE
TO BOOK
YOUR VIEWING



