



## 25 Cotswold Meadow, Witney

Guide Price £340,000



## 25 Cotswold Meadow

Witney

An immaculate two bedroom home positioned in an enviable cul-de-sac location on the edge of the popular Deer Park development.

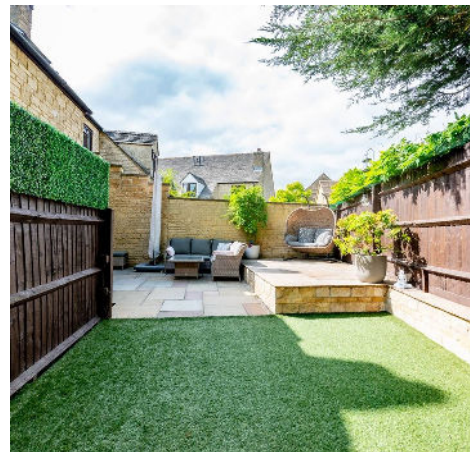
Council Tax band: C

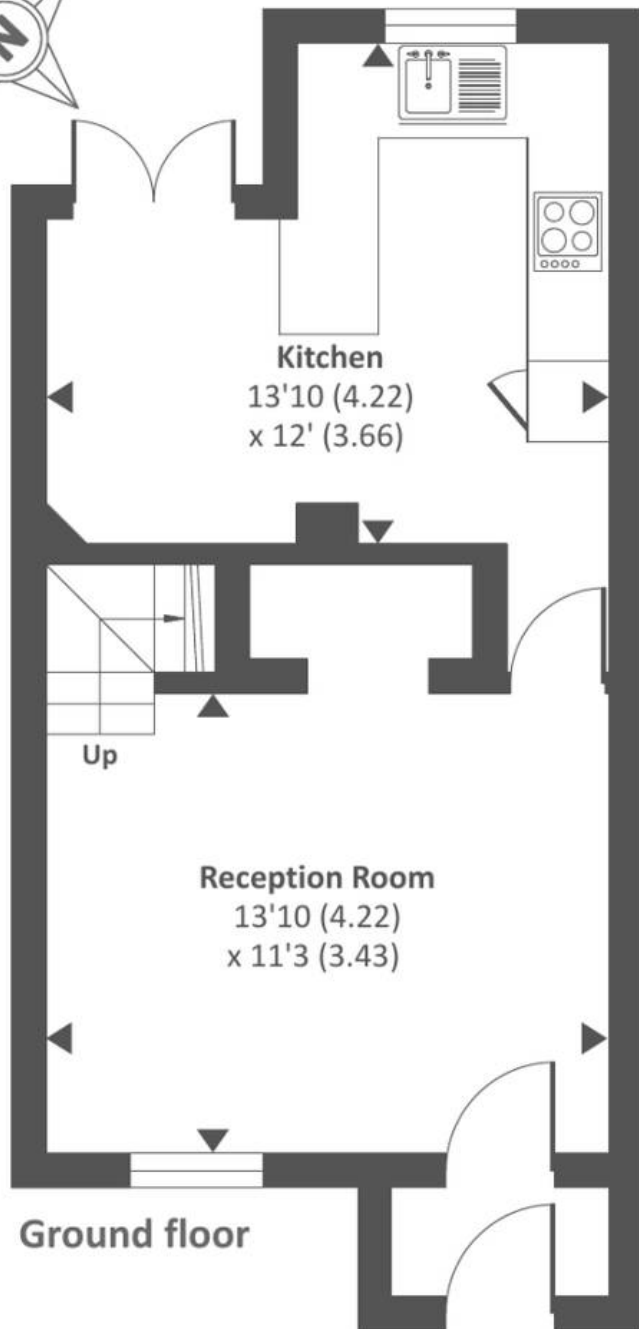
Tenure: Freehold

EPC Energy Efficiency Rating: C

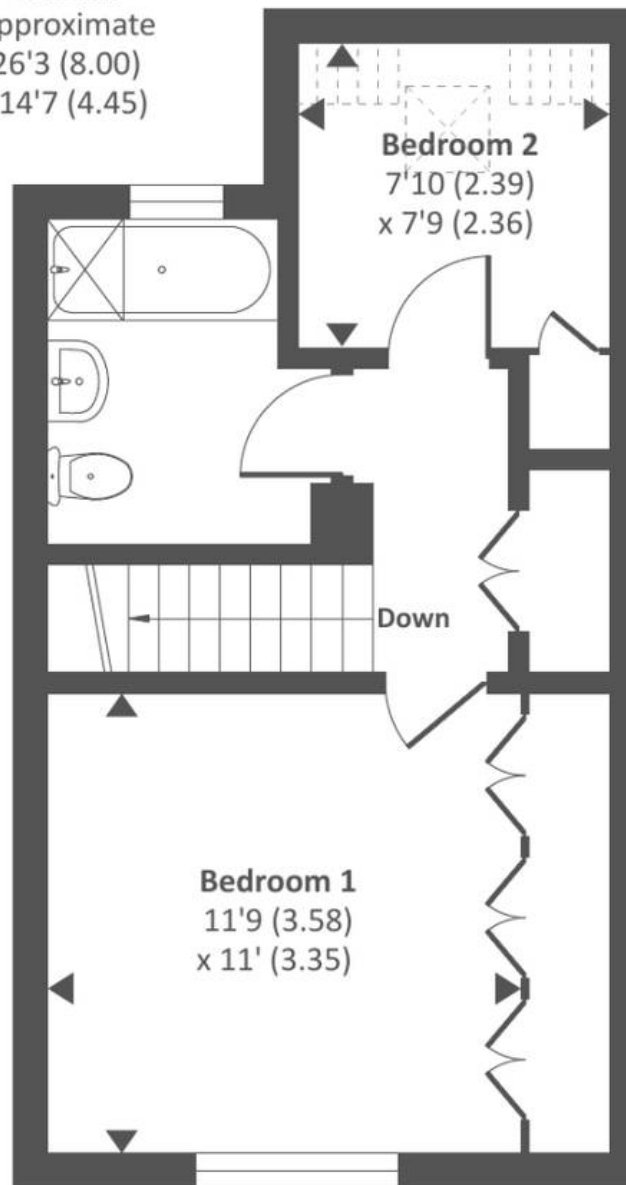
EPC Environmental Impact Rating: C

- A neatly presented two bedroom home positioned on the edge of the Deer Park development with access to the local bus route and within walking distance of Witney town centre.
- Two Bedrooms with ample storage space to the master bedroom.
- Garage and off-road parking.
- Sitting room with stone fireplace and log burner.
- Kitchen with fully integrated appliances.
- Beautifully landscaped garden.



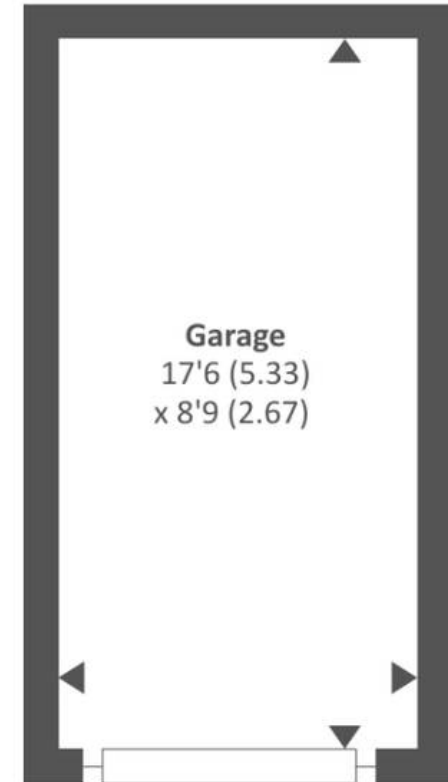


**Garden**  
Approximate  
26'3 (8.00)  
x 14'7 (4.45)



Approximate Area = 714 sq ft / 66.3 sq m  
Limited Use Area(s) = 7 sq ft / 0.6 sq m  
Garage = 155 sq ft / 14.3 sq m  
Total = 876 sq ft / 81.2 sq m  
For identification only - Not to scale

Denotes restricted  
head height





## Simpsons Witney Branch

4 Langdale Court, Witney - OX28 6AD

01993 835030 • [witney@simpsonsproperty.com](mailto:witney@simpsonsproperty.com) • [www.simpsonsproperty.com](http://www.simpsonsproperty.com)