



12 Garner Close, Carterton

Guide Price £325,000



12 Garner Close

A neatly presented two-bedroom detached bungalow located in a peaceful cul-de-sac position a short walk from the town centre.

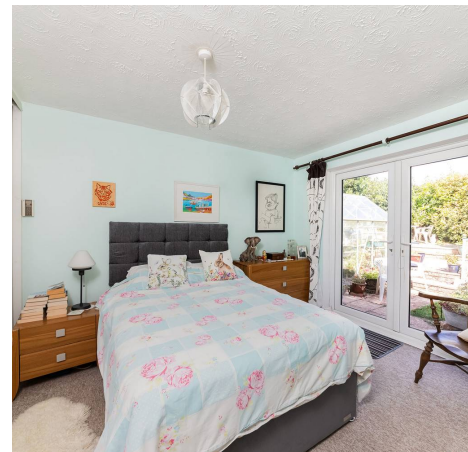
Council Tax band: D

Tenure: Freehold

EPC Energy Efficiency Rating: D

EPC Environmental Impact Rating: D

- Neatly presented two-bedroom detached bungalow located in a peaceful cul-de-sac location.
- Two spacious double bedrooms, bedroom one with built in wardrobe.
- Mature south facing garden.
- Garage, carport and off-street parking.
- Walking distance to the town centre.
- Sitting room with fireplace and gas fire.

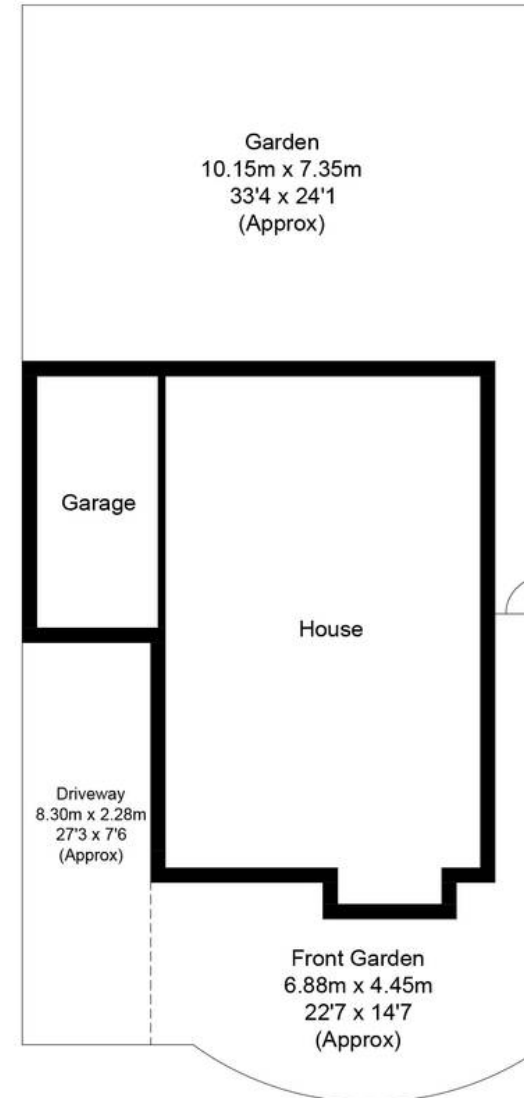
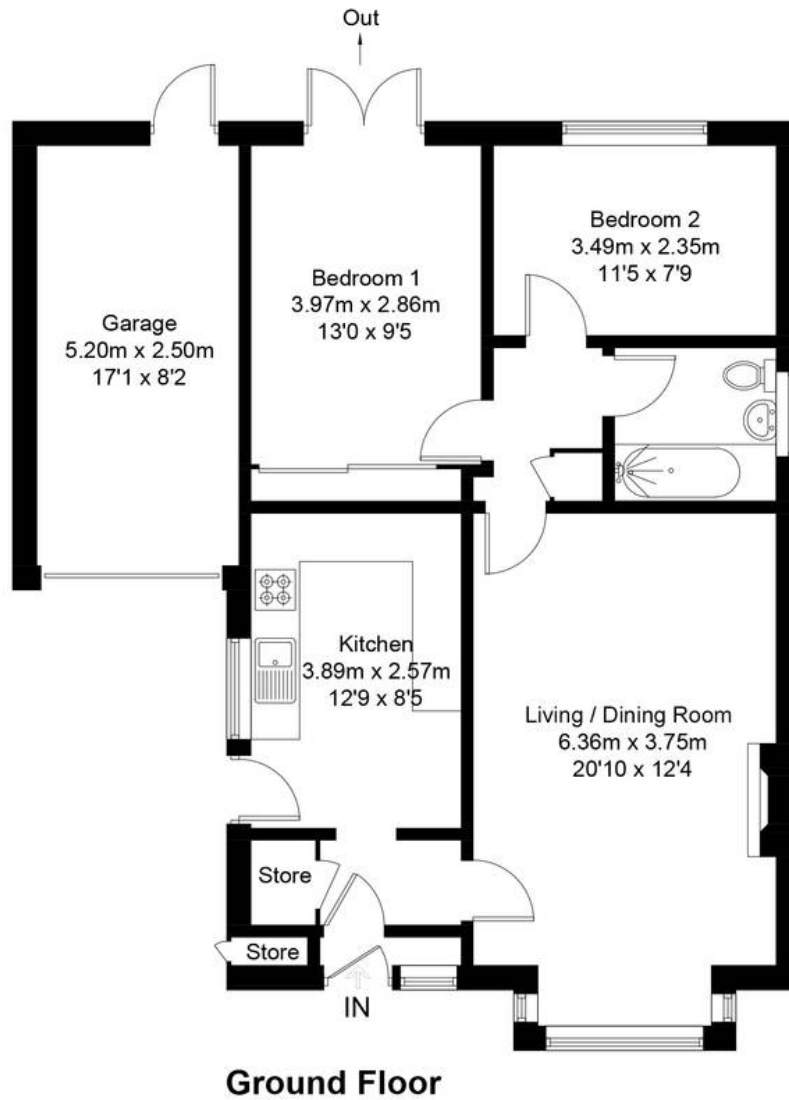




Garner Close, OX18

Approximate Gross Internal Area = 68.2 sq m / 734 sq ft
Garage = 13.4 sq m / 144 sq ft
Total = 81.6 sq m / 878 sq ft

For identification only - Not to scale





Simpsons Witney Branch

4 Langdale Court, Witney - OX28 6AD

01993 835030 • witney@simpsonsproperty.com • www.simpsonsproperty.com/