



## 68 Barrington Close, Witney

Offers In Excess of £580,000



## 68 Barrington Close

A beautifully presented detached four bedroom home located on the popular Deer Park development within walking distance of the nearby bus stop and Witney town centre.

Council Tax band: E

Tenure: Freehold

EPC Energy Efficiency Rating: C

EPC Environmental Impact Rating: C

- Beautifully presented detached four-bedroom home located on the popular Deer Park development.
- Recently updated kitchen/dining room with integrated appliances.
- Reception room, study and conservatory.
- Double length garage with power and light plus gated off-street parking.
- Four spacious bedrooms, bedroom one with stylish ensuite.
- South facing garden with decking and lawn.





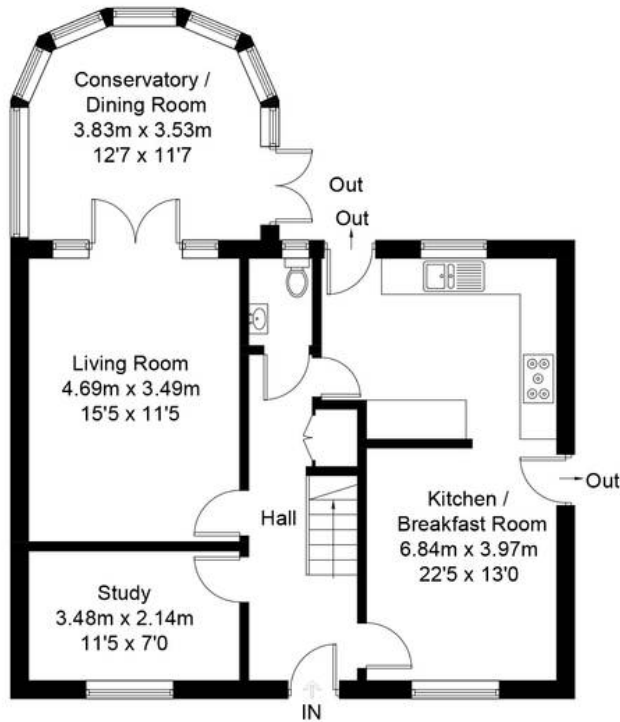
# Barrington Close, OX28

Approximate Gross Internal Area = 136.9 sq m / 1474 sq ft

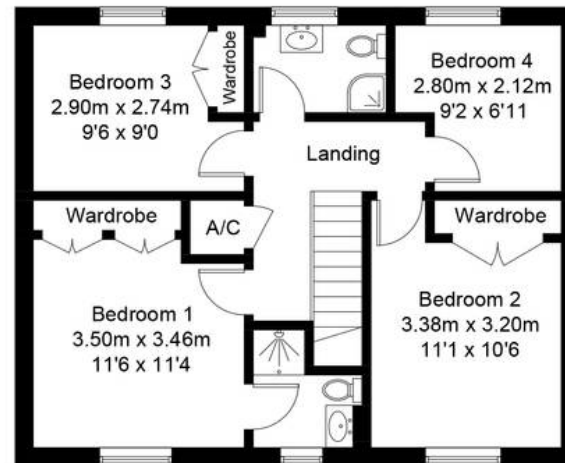
Garage = 27.8 sq m / 299 sq ft

Total = 164.7 sq m / 1773 sq ft

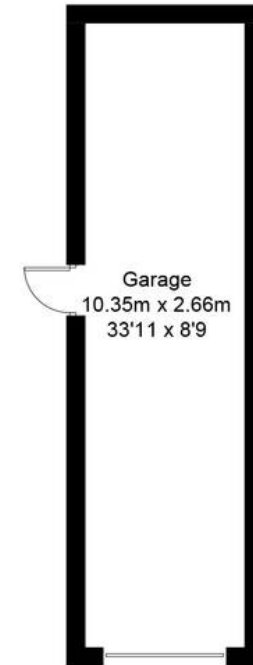
For identification only - Not to scale



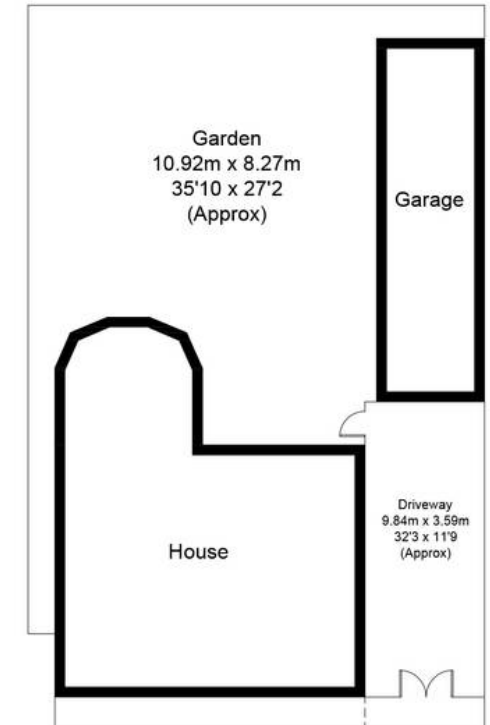
Ground Floor



First Floor



(Not Shown In Actual Location / Orientation)





## Simpsons Witney Branch

4 Langdale Court, Witney - OX28 6AD

01993 835030 • [witney@simpsonsproperty.com](mailto:witney@simpsonsproperty.com) • [www.simpsonsproperty.com/](http://www.simpsonsproperty.com/)