



Gabriel House Newbury Street, Wantage

£370,000

Wantage

Simpsons

The Proactive Agent



SCAN THE
QR CODE
FOR DETAILS

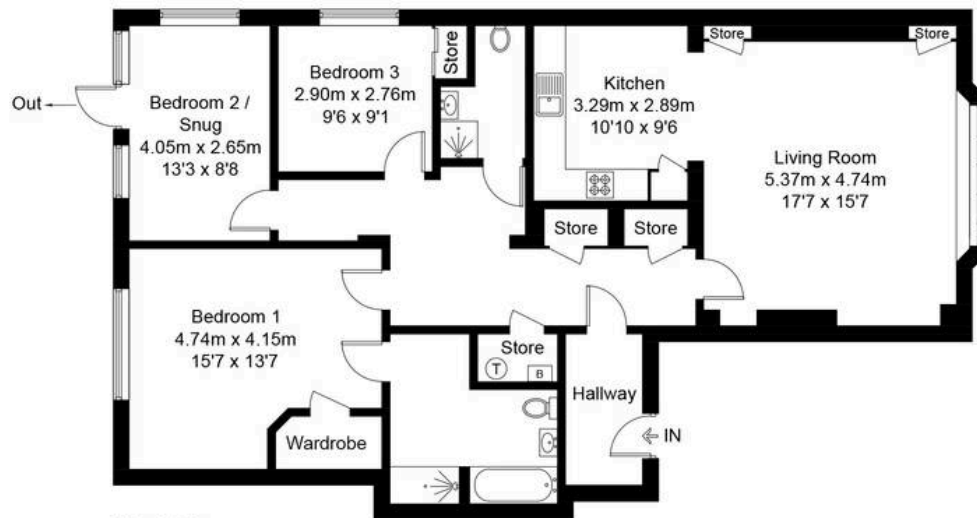




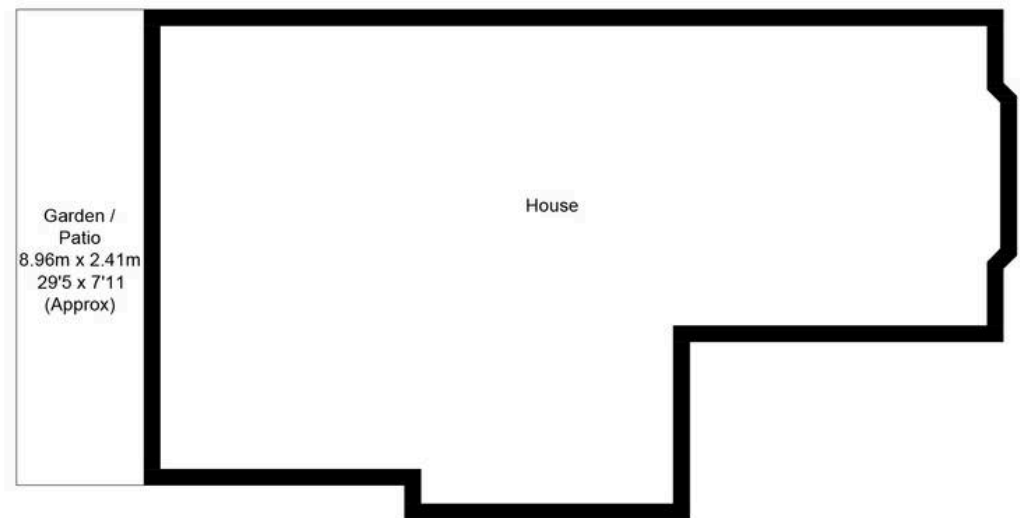
Gabriel House, OX12

Approximate Gross Internal Area = 117.4 sq m / 1264 sq ft

For identification only - Not to scale



First Floor



Floor plan produced in accordance with RICS Property Measurement Standards.

© Mortimer Photography. Produced for Simpsons.

Unauthorised reproduction prohibited. (ID1112130)

Gabriel House Newbury Street

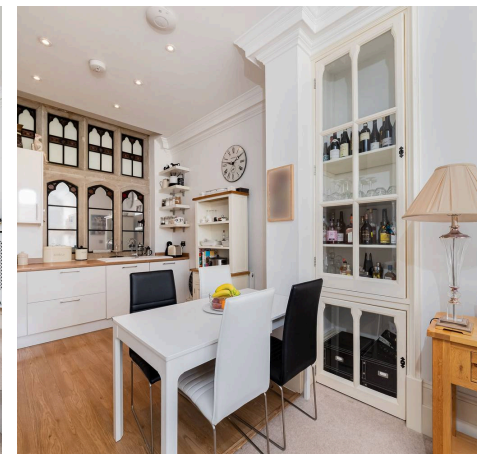
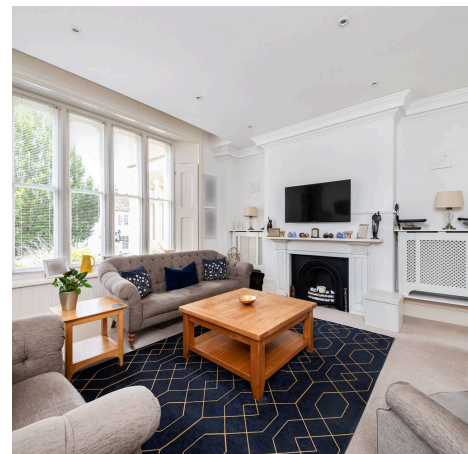
Wantage, Wantage

A stunning ground floor apartment with an abundance of character and just a short walk from Wantage Market Place.

Council Tax band: TBD

Tenure: Leasehold

- Beautiful Victorian Building In The Heart Of Wantage
- Original Character Features
- Over 1200sqft Of Accommodation
- Private Seating Area At The Rear



SCAN THE
QR CODE
TO BOOK
YOUR VIEWING



