



West Quay, Abingdon, OX14

£695,000

Property Description

Located within Abingdon's exclusive Marina Development with unspoilt views of the basin, this superb waterside home has been finished to the highest of standards throughout.

Set over three floors, this four bedroom home overlooking Abingdon Marina, is offered for sale in excellent condition having been refurbished throughout. Situated to the ground floor is a cloakroom/ WC, under stair cupboard with light and power, a modern kitchen, and a lounge/diner with a further large cupboard (light and power). To the first floor can be found the master bedroom with dressing room and en-suite shower room, a further bedroom, and the primary bathroom. On the second floor are two further bedrooms. In addition to a modern kitchen with Bosch appliances, the sanitary ware in the bathrooms and en-suite have also been upgraded, creating a ready to move into, well proportioned modern family home. A small garden accessed from the primary reception room, looking toward the mooring gives sufficient space for table and chairs, ideal for summer time entertaining whilst taking in the panoramic views across the Marina.

EPC Rating: D



Key Features

- ✓ Garage located to the immediate front of the property.
- ✓ A four bedroom waterside town house arranged over three floors with stunning panoramic views.
- ✓ Open plan master suite with dressing room and en-suite shower.
- ✓ Allocated parking.
- ✓ Modern kitchen, bathroom and en-suite.
- ✓ Private mooring with external power.
- ✓ No onward chain.





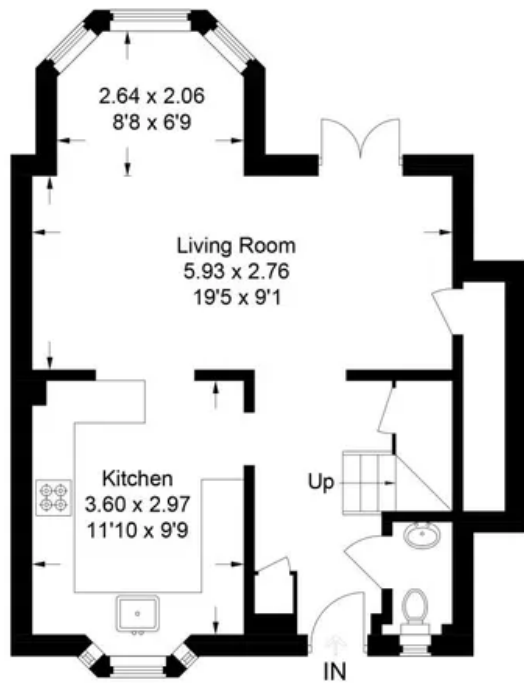




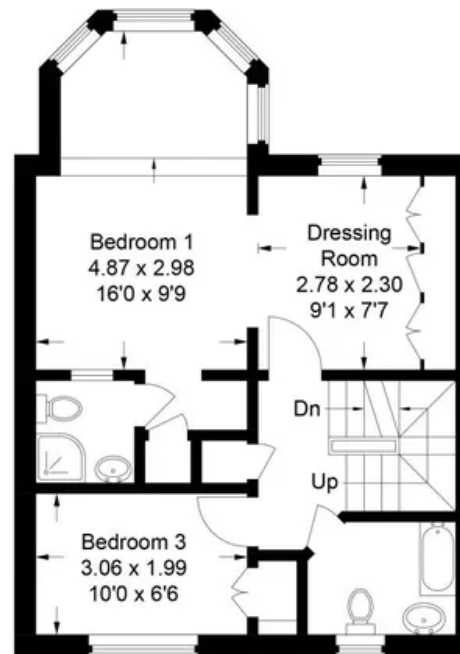




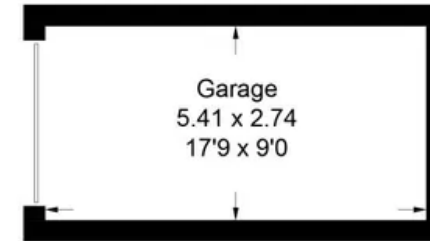
Approximate Gross Internal Area
 Ground Floor = 46.8 sq m / 504 sq ft
 First Floor = 43.7 sq m / 470 sq ft
 Second Floor (Excluding Eaves) = 22.2 sq m / 239 sq ft
 Garage = 15.1 sq m / 163 sq ft
 Total = 127.8 sq m / 1376 sq ft



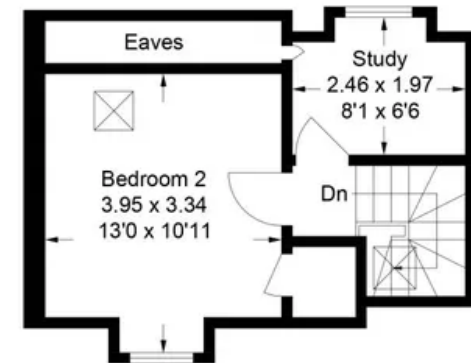
Ground Floor



First Floor



(Not Shown In Actual
 Location / Orientation)



Second Floor

This plan is for layout guidance only. Not drawn to scale unless stated. Windows and door openings are approximate. Whilst every care is taken in the preparation of this plan, please check all dimensions, shapes and compass bearings before making any decisions reliant upon them.

© CJ Property Marketing Ltd Produced for Simpsons

Simpsons Estate Agents

01235520079

abingdon@simpsonsproperty.com

